

# SYDNEY COVE

PROPERTY



201/45 Shelley Street Sydney NSW

1 1

Spacious 73sqm one bedroom apartment with study located in the sought after King Street Wharf development. The perfect city pad or investment opportunity for those looking for an apartment situated in a world class location. A short stroll to the bustling Barangaroo and Darling Harbour precincts which boasts a large variety of restaurants, bars, cafes and entertainment. Easy access to Wynyard Station and ferry transportation.

- Large balcony with leafy views, floor to ceiling windows for maximum light
- Combined open plan living/dining room and modern kitchen with gas cooking
- Spacious separate study room, bedroom with built ins & balcony access

**Type** : Apartment

**Price** : \$ 780,000

**View** : <https://www.sydneycoveproperty.com/sale/nsw/sydney-city/sydney/residential/apartment/8492557>



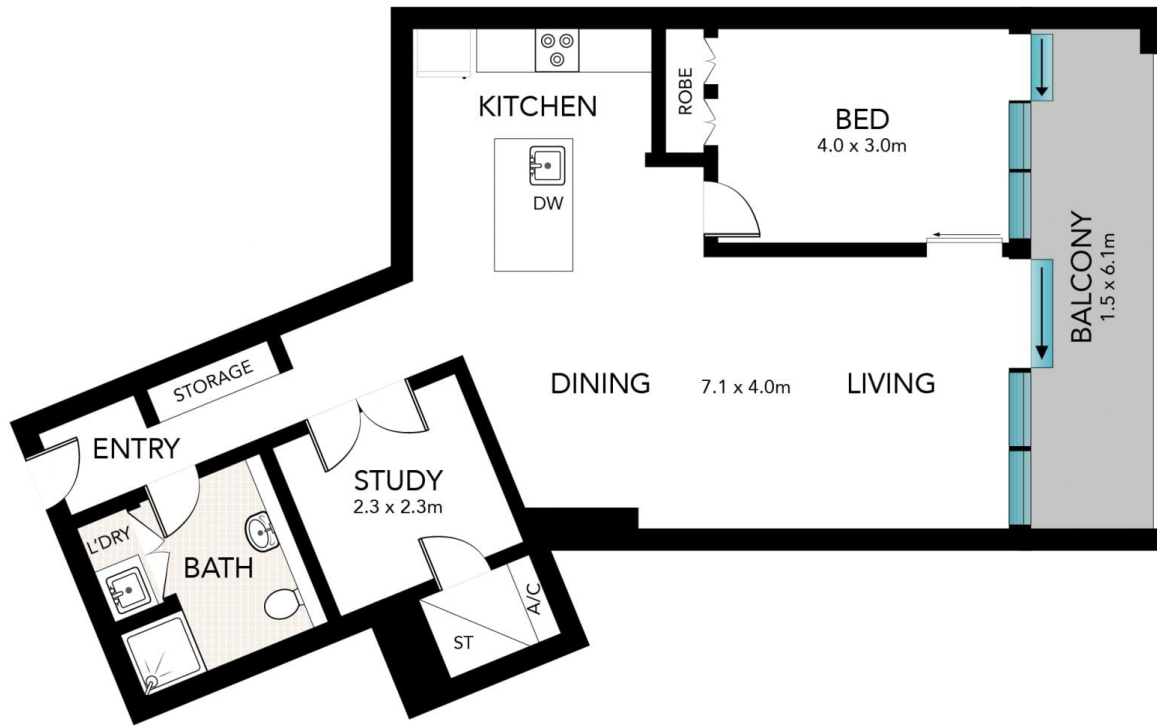
**Brenden Taliana**  
02 9241 1288



**Bryn Fowler**  
02 8259 3333

[For full version visit the website](https://www.sydneycoveproperty.com)

<https://www.sydneycoveproperty.com>



Scale in metres. Indicative only. Dimensions are approximate. All information contained here in is gathered from sources we believe to be reliable. However, we cannot guarantee its accuracy and interested persons should rely on their own enquiries.

201/45 Shelley Street, Sydney

**SYDNEY  
COVE**  
PROPERTY