

SYDNEY COVE

PROPERTY



39/1 Dwyer Street Chippendale NSW

1 

Situated in the heart of Chippendale, within walking distance to various universities, transportation options, and next door to the 'Central Park' mall and park areas. This elegantly presented studio is the Ideal apartment for professionals or savvy investors seeking a remarkable city residence.

Type : Studio
Price : \$ 400,000
View : <https://www.sydneycoveproperty.com/sale/nsw/sydney-city/chippendale/residential/studio/8236109>

- Studio located on level 6 south facing with full of sun and light
- Well presented kitchen with built in oven & range hood
- Bathroom with marble & ceramic tiles
- Common rooftop terrace and shared laundry
- Lift access, intercom security
- Short walk to the CBD & transport, best position next to UTS and Central Park



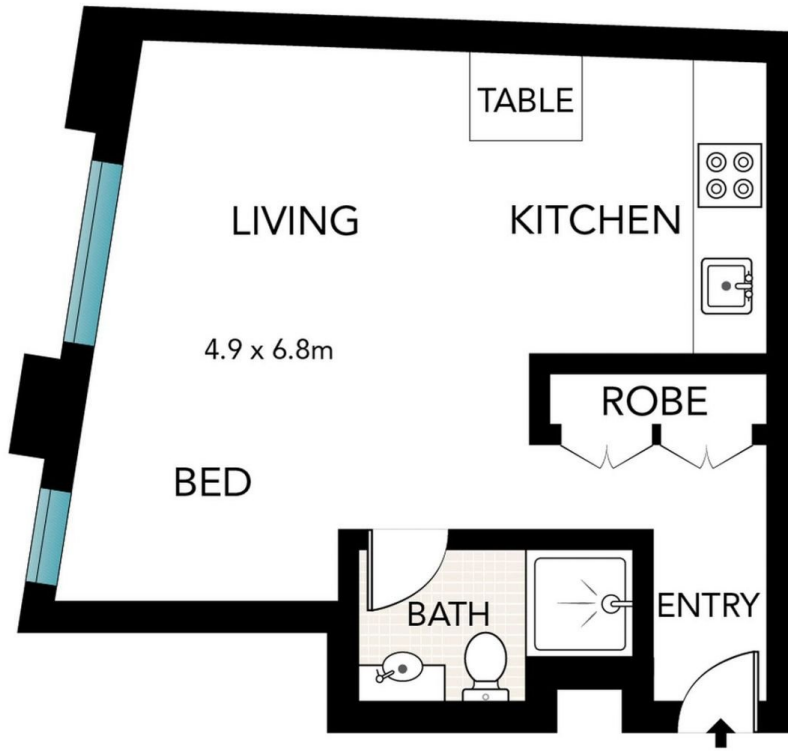
Monique Lavers
82593333



Bryn Fowler
02 8259 3333

[For full version visit the website](https://www.sydneycoveproperty.com)

<https://www.sydneycoveproperty.com>



Scale in metres. Indicative only. Dimensions are approximate. All information contained here in is gathered from sources we believe to be reliable. However, we cannot guarantee its accuracy and interested persons should rely on their own enquiries.

39/1 Dwyer Street, Chippendale

**SYDNEY
COVE**
PROPERTY