

SYDNEY COVE

PROPERTY



1003/209 Castlereagh Street Sydney NSW

1 1

Now on offer is this immaculately presented one bedroom apartment located in The Castlereagh building designed by globally renowned architects Tony Owen Partners. Situated opposite Hyde Park, on the corner of Bathurst and Castlereagh Street, this modern east facing apartment offers the best of in mid-city living.

- Light filled eastern aspect featuring Hyde Park glimpses
- Premium finishes including European gas appliances
- Excellent sized bedroom with ample storage/built in robe
- Balcony framed with bronze louvres and city views
- Ducted air conditioning, European laundry, timber flooring
- Security intercom entrance and lift access, low strata rates
- Featuring built in study desk and storage cage on title

Type : Apartment

Price : \$ 740,000

View : <https://www.sydneycoveproperty.com/sale/nsw/sydney-city/sydney/residential/apartment/8229522>



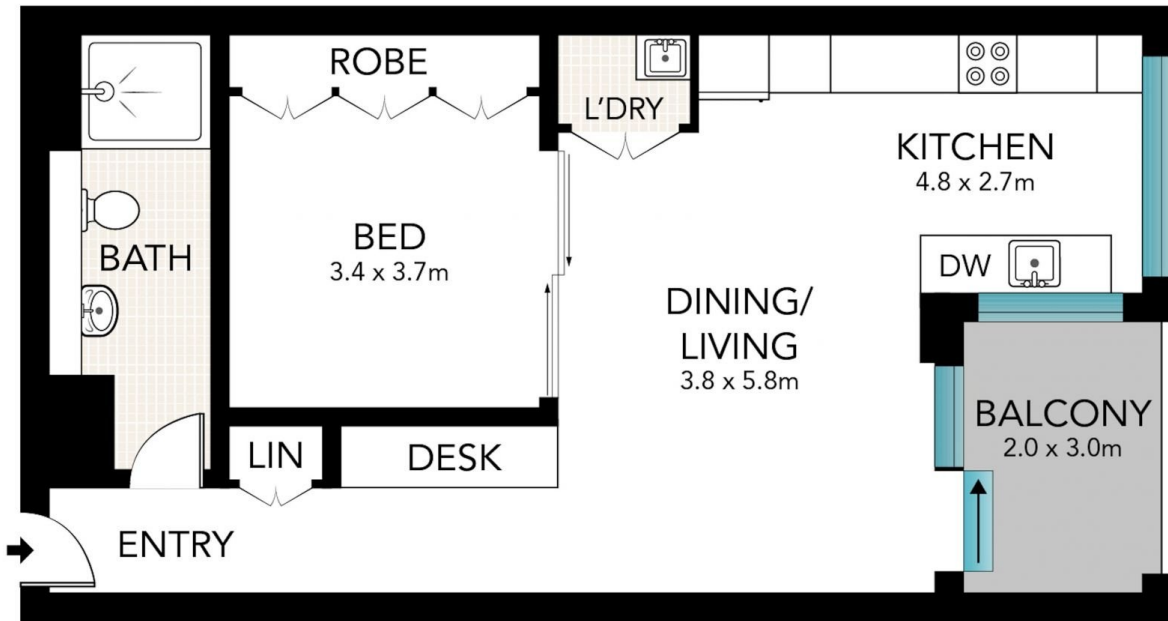
Brenden Taliana
02 9241 1288



Monique Lavers
82593333

[For full version visit the website](https://www.sydneycoveproperty.com)

<https://www.sydneycoveproperty.com>



Scale in metres. Indicative only. Dimensions are approximate. All information contained here in is gathered from sources we believe to be reliable. However, we cannot guarantee its accuracy and interested persons should rely on their own enquiries.

209 Castlereagh Street, Sydney

**SYDNEY
COVE**
PROPERTY