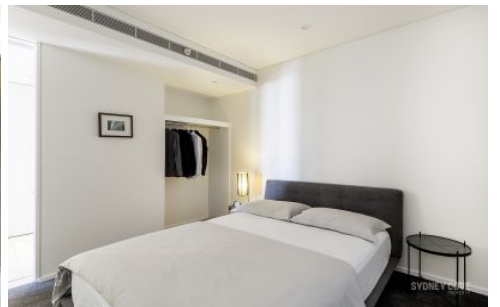


SYDNEY COVE

PROPERTY



3 Carlton St Chippendale NSW

2 1 1

Available is this sophisticated, open plan, two bedroom apartment in One Central Park. Immaculately presented and located on a high floor, this apartment commands excellent easterly views towards the city. One Central Park is a stunning development extending beyond the apartment with incredible amenities, featuring a unique vertical garden, a shopping centre with bars & restaurants, pool, gym, concierge and is conveniently positioned metres from Central Station, Broadway, UTS and the CBD.

Features include:

- Interiors crafted by Award-Winning designers
- Open living area with movable feature walls
- Designer smart kitchen, stone & timber finishes

Type : Apartment

View : <https://www.sydneycoveproperty.com/lease/nsw/sydney-city/chippendale/residential/apartment/8220570>



Robert McFadden
02 8259 3333



Cherie Xue
0407 668 877

[For full version visit the website](https://www.sydneycoveproperty.com)

<https://www.sydneycoveproperty.com>