

# SYDNEY COVE

PROPERTY



## 4003/93 Liverpool Street Sydney NSW

1 1 1

Located in one of Sydney's most iconic residential buildings, 'World Tower', the apartment delivers a vibrant inner-city lifestyle with captivating skyscraper outlooks from high up on level 40. Exclusive to only the mid-rise residents and their guests is the luxurious resort style facilities that are sure to impress all that visit. Nestled in the vibrant heart of the Sydney CBD, this property offers the ultimate convenience with World Square shopping complex at your door step and only a short walk to Town Hall Station and light rail.

- Located in the mid-rise section on level 40 with city and water views
- Open plan living & dining area opening up to the winter garden

**Type** : Apartment

**Price** : \$ 930,000

**View** : <https://www.sydneycoveproperty.com/sale/nsw/sydney-city/sydney/residential/apartment/8174901>



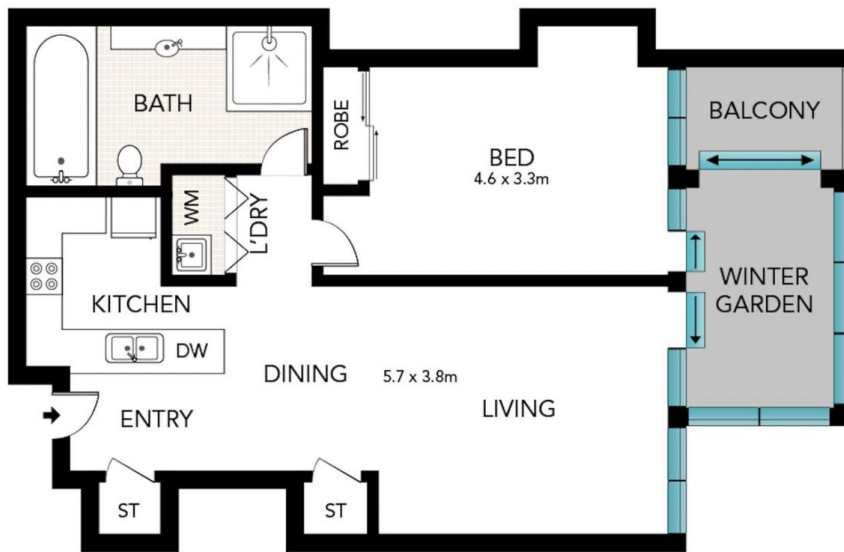
**Brenden Taliana**  
02 9241 1288



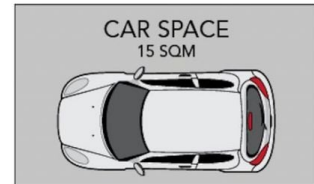
**Bryn Fowler**  
02 8259 3333

[For full version visit the website](https://www.sydneycoveproperty.com)

<https://www.sydneycoveproperty.com>



(NOT IN POSITION)



(NOT IN POSITION)



Scale in metres. Indicative only. Dimensions are approximate. All information contained here in is gathered from sources we believe to be reliable. However, we cannot guarantee its accuracy and interested persons should rely on their own enquiries.

4003/91 Liverpool Street, Sydney

**SYDNEY  
COVE**  
PROPERTY