

SYDNEY COVE

PROPERTY



1602/653 George Street Sydney NSW

2 2

On offer is a renovated, fully furnished, north, east & west facing, high floor apartment with far reaching city views. Located in the Mantra Sydney Central building run by the world-renowned Accor group. An amazing opportunity to capitalise on massive net returns by leasing through a specialized short term leasing agency. Enjoy a hassle free, high performing income generating mid-city asset, conveniently located only 100m walk from the Capital Theatre and footsteps away from the China Town light rail.

- Estimated net returns of up to \$95,630.04 p/a = (9.1% net return fully managed) through short term leasing
- Recently renovated with hybrid flooring, new kitchen joinery, fresh paint, new fridge, new cooktop and new washer/dryer

Type : Apartment
Price : \$ 990,000
View : <https://www.sydneycoveproperty.com/sale/nsw/sydney-city/sydney/residential/apartment/8155202>



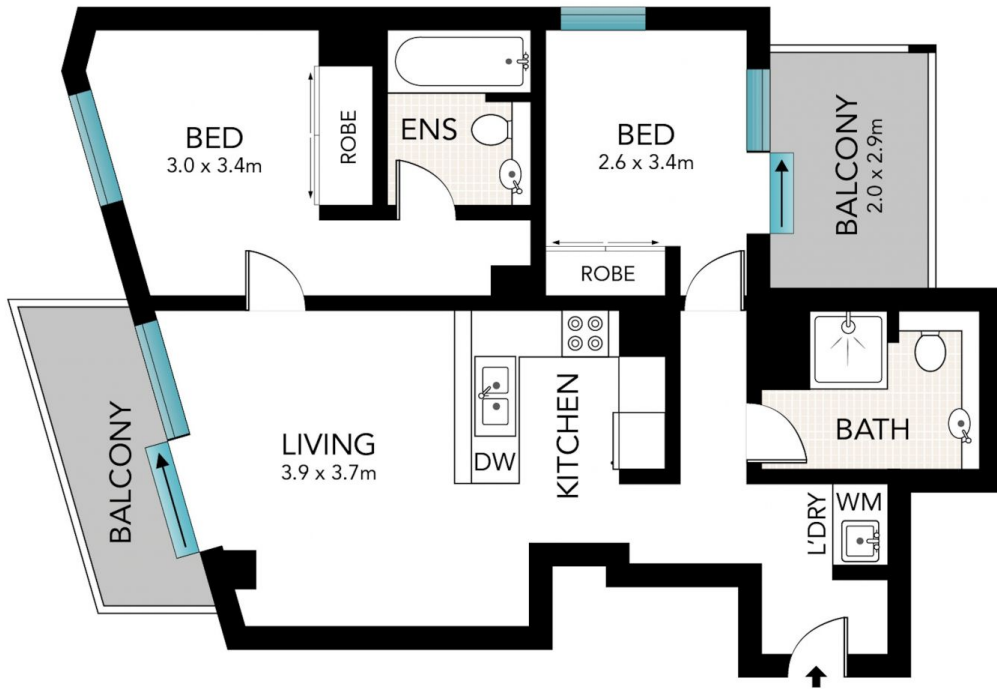
Brenden Taliana
02 9241 1288



Bryn Fowler
02 8259 3333

[For full version visit the website](https://www.sydneycoveproperty.com)

<https://www.sydneycoveproperty.com>



Scale in metres. Indicative only. Dimensions are approximate. All information contained here in is gathered from sources we believe to be reliable. However, we cannot guarantee its accuracy and interested persons should rely on their own enquiries.

653 George Street, Sydney

**SYDNEY
COVE**
PROPERTY