

SYDNEY COVE

PROPERTY



76/267-277 Castlereagh Street Sydney NSW

2 2 1

Presenting a large 108sqm two bedroom apartment with dual aspects, capturing fantastic views from the east and west overlooking Hyde Park, the harbour and city skyline. Situated high up on level 25 in the centrally located Museum Towers building. The apartment has been recently refreshed with new carpet, paint and various other improvements, and is ready to be occupied or leased out right away. Located only 75m away from Museum Station and on the cusp of Hyde Park.

- Strata \$5,000 p/q (approx.), Water: \$179.90 p/q, Council: \$437.40 p/q
- Dual aspects with views of Hyde Park, the harbour & city skyline
- Large balcony/sunroom on each side of the apartment

Type : Apartment

Price : \$ 990,000

View : <https://www.sydneycoveproperty.com/sale/nsw/sydney-city/sydney/residential/apartment/8130525>



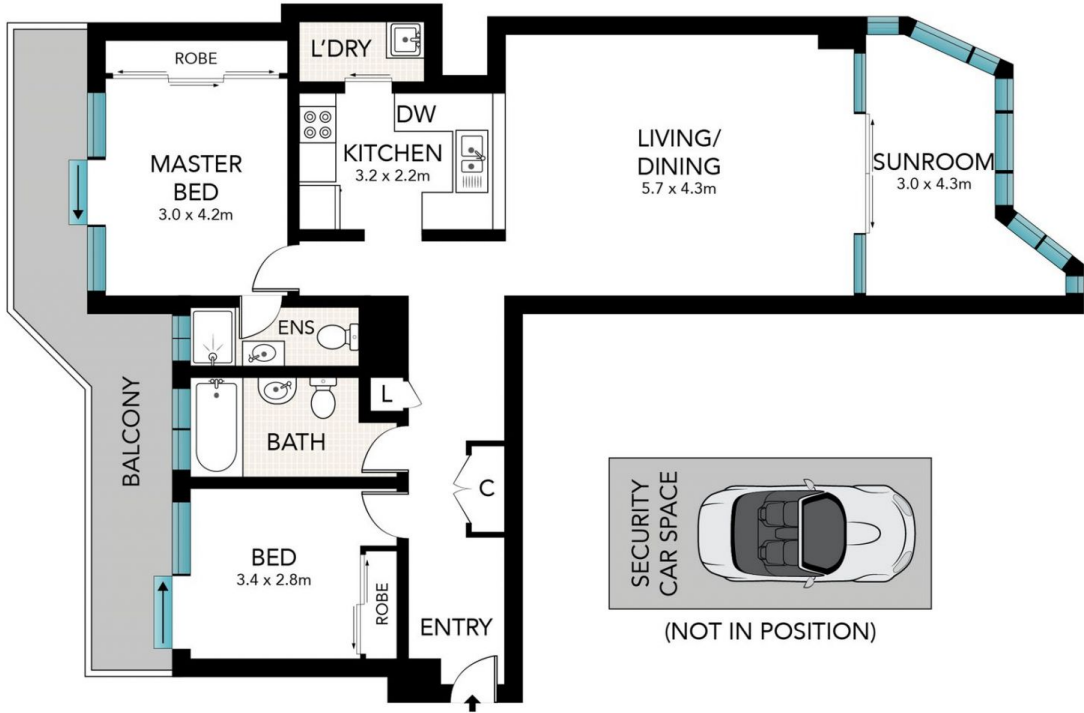
Brenden Taliana
02 9241 1288



Bryn Fowler
02 8259 3333

[For full version visit the website](https://www.sydneycoveproperty.com)

<https://www.sydneycoveproperty.com>



0 1 2 3 4 5



Scale in metres. Indicative only. Dimensions are approximate. All information contained here in is gathered from sources we believe to be reliable. However, we cannot guarantee its accuracy and interested persons should rely on their own enquiries.

76/267 Castlereagh Street, Sydney

**SYDNEY
COVE**
PROPERTY