

# SYDNEY COVE

PROPERTY



2205/91 Liverpool Street Sydney NSW

1 1

Located in one of Sydney's most iconic residential buildings, 'World Tower', the apartment delivers a vibrant inner-city lifestyle with captivating skyscraper outlooks. Nestled in the vibrant heart of the Sydney CBD, this property offers the ultimate convenience with World Square shopping complex at your door step. The building features fantastic amenities and is only a short stroll to Town Hall Station and light rail.

- Open plan living & dining area opening up to the winter garden
- Floor-to-ceiling windows maximizing natural light and air flow
- Large kitchen with gas cooking, stone benchtops and dishwasher

**Type** : Apartment

**Price** : \$ 820,000

**View** : <https://www.sydneycoveproperty.com/sale/nsw/sydney-city/sydney/residential/apartment/8127343>



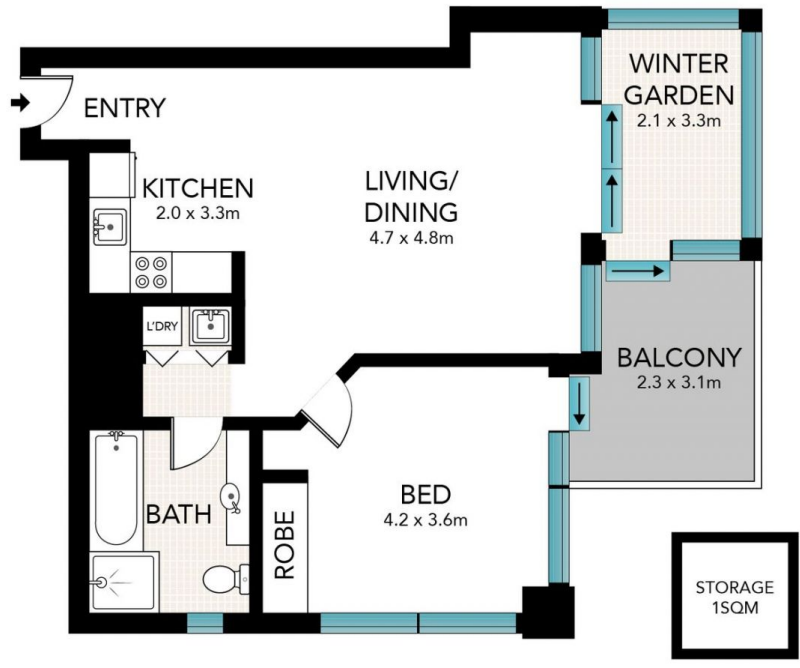
**Brenden Taliana**  
02 9241 1288



**Bryn Fowler**  
02 8259 3333

[For full version visit the website](https://www.sydneycoveproperty.com)

<https://www.sydneycoveproperty.com>



(NOT IN POSITION)



Scale in metres. Indicative only. Dimensions are approximate. All information contained here in is gathered from sources we believe to be reliable. However, we cannot guarantee its accuracy and interested persons should rely on their own enquiries.

2205/91 Liverpool Street, Sydney

**SYDNEY  
COVE**  
PROPERTY