

# SYDNEY COVE

PROPERTY



508/49-53 Regent Street Chippendale NSW

3 🛏 2 🚗 2 🚗

This elegantly presented three-bedroom apartment with two parking spaces features a large floor plan with an abundance of internal space. Situated in an ultra-convenient city-fringe area, it is within walking distance to various universities, transportation options, and Central Park Mall at your doorstep. Located in the sought after Regent Hall building, which has recently had renovations to the common areas such as the gym, BBQ courtyard, common hallways and more.

- Large open-plan living and dining area with a balcony offering scenic city views
- Three spacious bedrooms equipped with walk-in wardrobes/built-in wardrobes
- Modern, sleek kitchen equipped with quality appliances

[For full version visit the website](https://www.sydneycoveproperty.com)

**Type** : Apartment  
**Price** : \$ 1,150,000  
**View** : <https://www.sydneycoveproperty.com/sale/nsw/sydney-city/chippendale/residential/apartment/8093568>

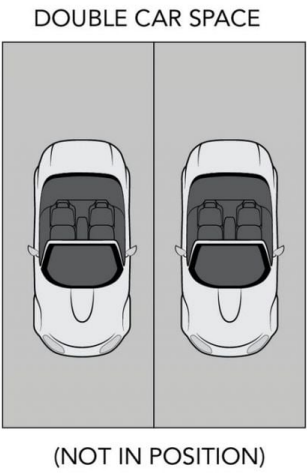
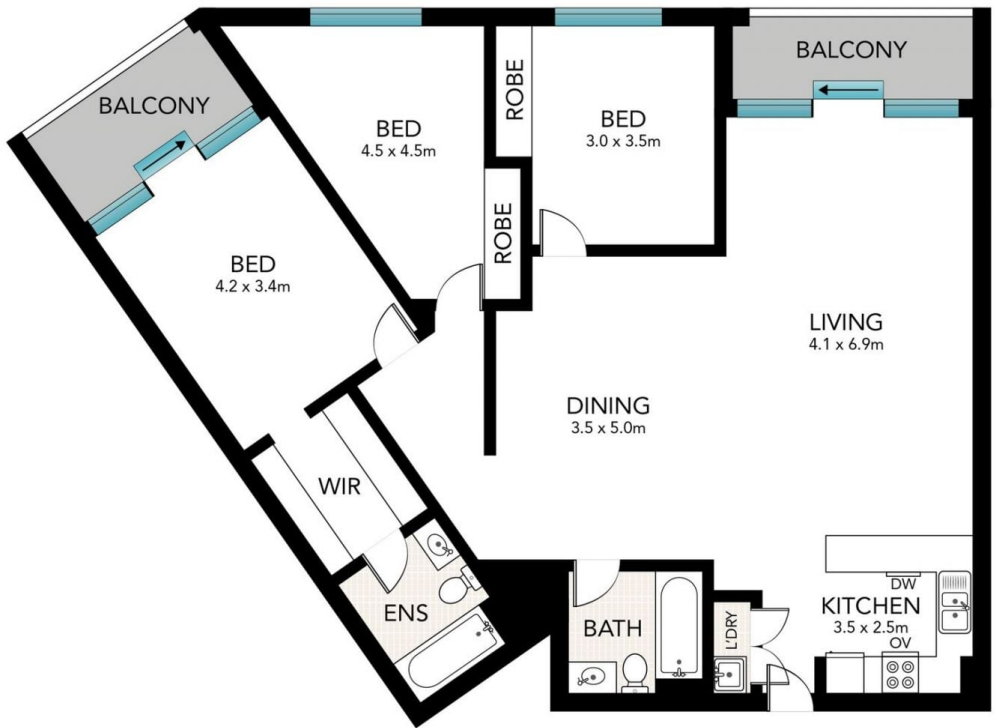


**Brenden Taliana**  
02 9241 1288



**Bryn Fowler**  
02 8259 3333

<https://www.sydneycoveproperty.com>



Scale in metres. Indicative only. Dimensions are approximate. All information contained here in is gathered from sources we believe to be reliable. However, we cannot guarantee its accuracy and interested persons should rely on their own enquiries.

508/49-53 Regent Street, Chippendale

**SYDNEY COVE**  
PROPERTY