

SYDNEY COVE

PROPERTY



601/38 Bridge Street Sydney NSW

1 1

This beautifully presented, one bedroom apartment is situated in the popular 'Bridgeport' building, located only 300 metres away from Sydney Harbour. Bridgeport benefits hugely from its position on the cusp of the exciting new Quay Quarter neighbourhood, with Quay Quarter Lanes cafes, restaurants, and retail offerings enhancing the lifestyle and community around the Circular Quay area.

- Immaculately presented, beautifully renovated throughout
- This particular floorplan is rarely offered to the market, 52m²
- Floorplan allows for either study or separate dining area
- Secure building featuring an on-site Building Manager and gym
- Easy walk to harbour, Opera House, Bridge St light rail,

Type : Apartment
Price : \$ 895,000
View : <https://www.sydneycoveproperty.com/sale/nsw/sydney-city/sydney/residential/apartment/8071656>



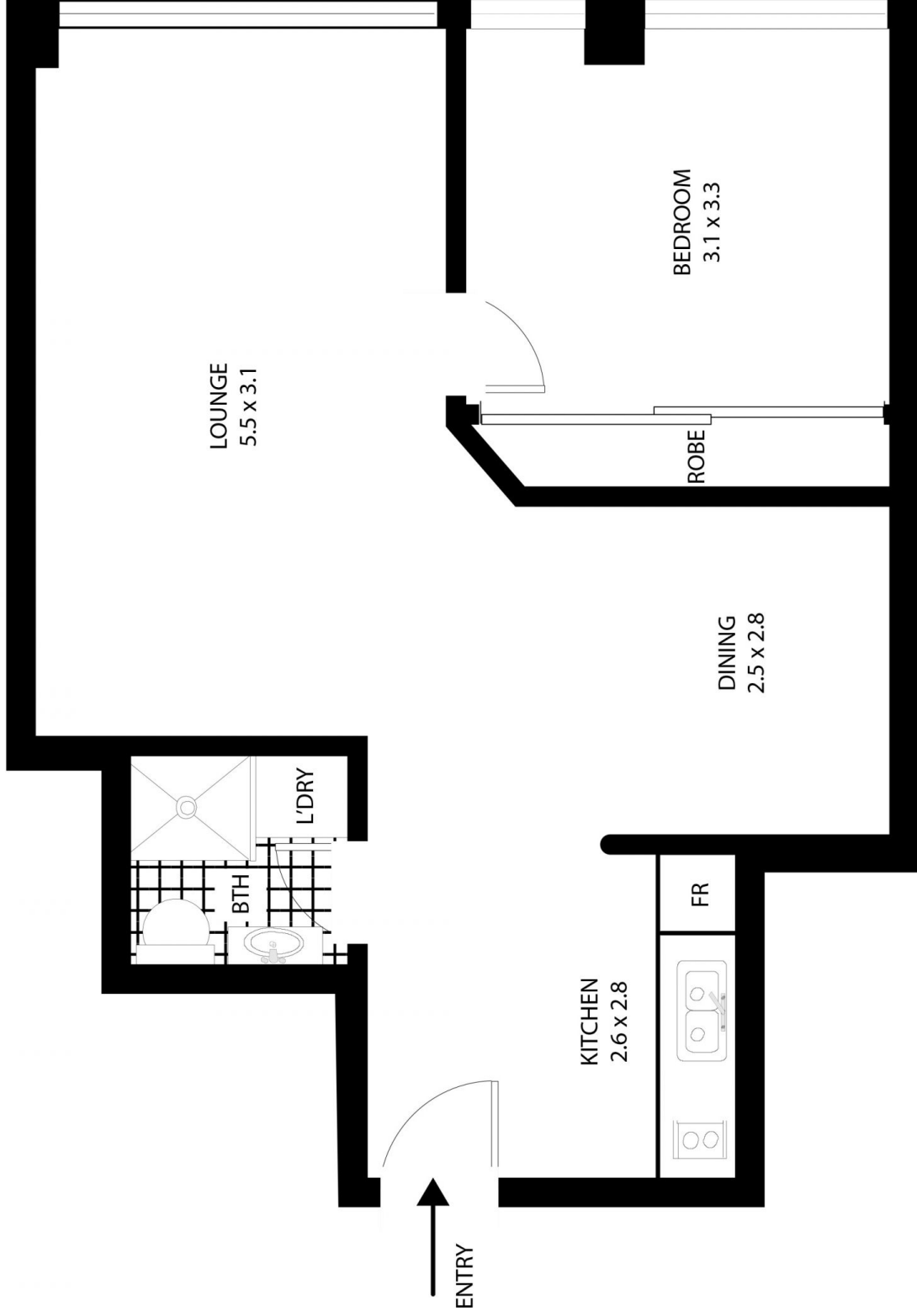
Bryn Fowler
02 8259 3333



Grant Ashby
02 9241 1288

[For full version visit the website](https://www.sydneycoveproperty.com)

<https://www.sydneycoveproperty.com>



601/38 Bridge St Sydney

All measurements are approximate only. Plan is provided as an indication of layout

