

SYDNEY COVE

PROPERTY



38 College Street Darlinghurst NSW

1 1

Truly a one of a kind apartment, featuring stunning fully renovated interiors and breathtaking views overlooking Hyde Park, the city and beyond. Situated high up on level 13 in the prominent Hyde Park Plaza building, you are only a short 240m stroll to Museum Station and on the cusp of the bustling Oxford Street precinct.

- Electricity and Water included in the rent
- Extraordinary views of Hyde Park, the expansive city skyline and beyond
- Beautiful, high quality renovated interiors throughout the apartment
- Bedroom with double glazed windows, direct views of Hyde Park and the city
- Multi aspects, two separate balconies, split system air

Type : Apartment

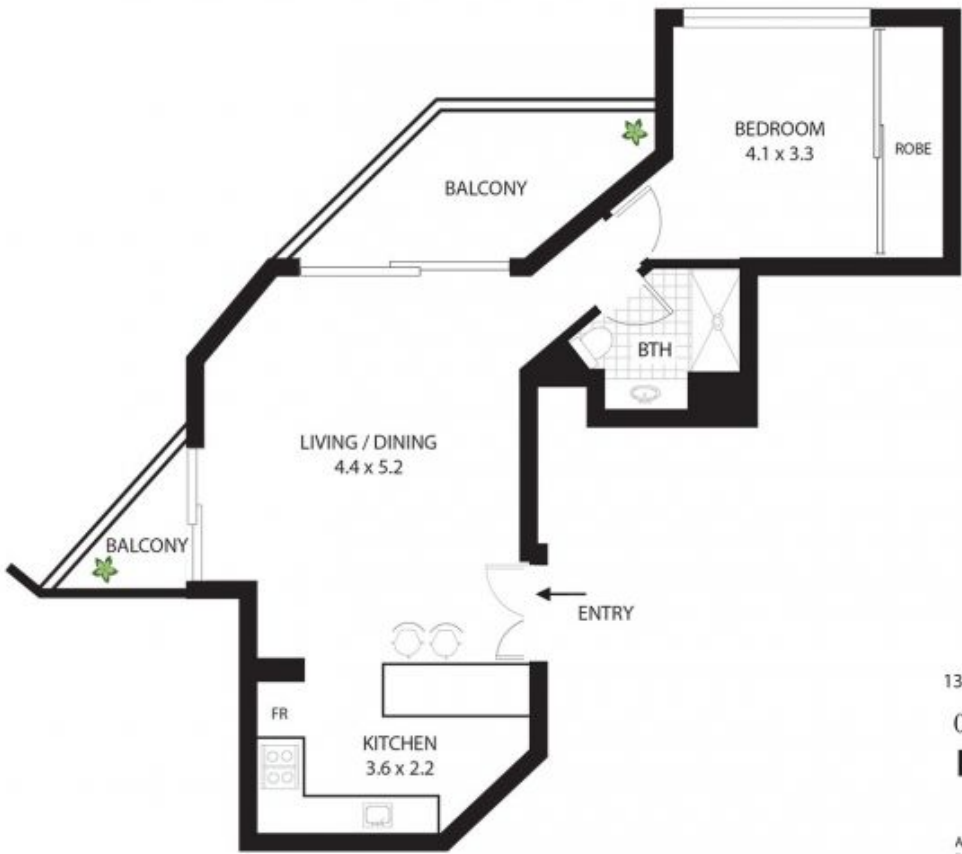
View : <https://www.sydneycoveproperty.com/lease/nsw/eastern-suburbs/darlinghurst/residential/apartment/7978153>



Gareth Bootland
02 8259 3333

[For full version visit the website](https://www.sydneycoveproperty.com)

<https://www.sydneycoveproperty.com>



1305/38 College Street Sydney



SCALE

All measurements are approximate only.
Plan is provided as an indication of layout