

SYDNEY COVE

PROPERTY



27/492-500 Elizabeth Street (access via 27 Belvoir St)
Surry Hills NSW

1 🛏 1 🚿 1 🚗

Located at the rear of the sought-after 'Tudor Gardens' building with direct access from 27 Belvoir St, this unique and generously proportioned courtyard one bedroom apartment offers versatile indoor/outdoor living coupled with all the conveniences of the quintessential Surry Hills lifestyle. The intelligent, free-flowing layout incorporates two entrances with the spacious lounge/dining area leading to a double bedroom (with built-ins) and through to the private courtyard - ideal for entertaining. The parking is in the form of a lock-up garage and is on a separate title for added flexibility. An address of unparalleled convenience with Central Station and Eddy Ave at your doorstep, or a short walk to Sydney Uni, UTS, the CBD, and Chinatown.

Type : Apartment
Price : \$ 832,000
Building Size : 80 sqm
View : <https://www.sydneycoveproperty.com/sale/nsw/eastern-suburbs/surry-hills/residential/apartment/7977667>



Brenden Taliana
02 9241 1288

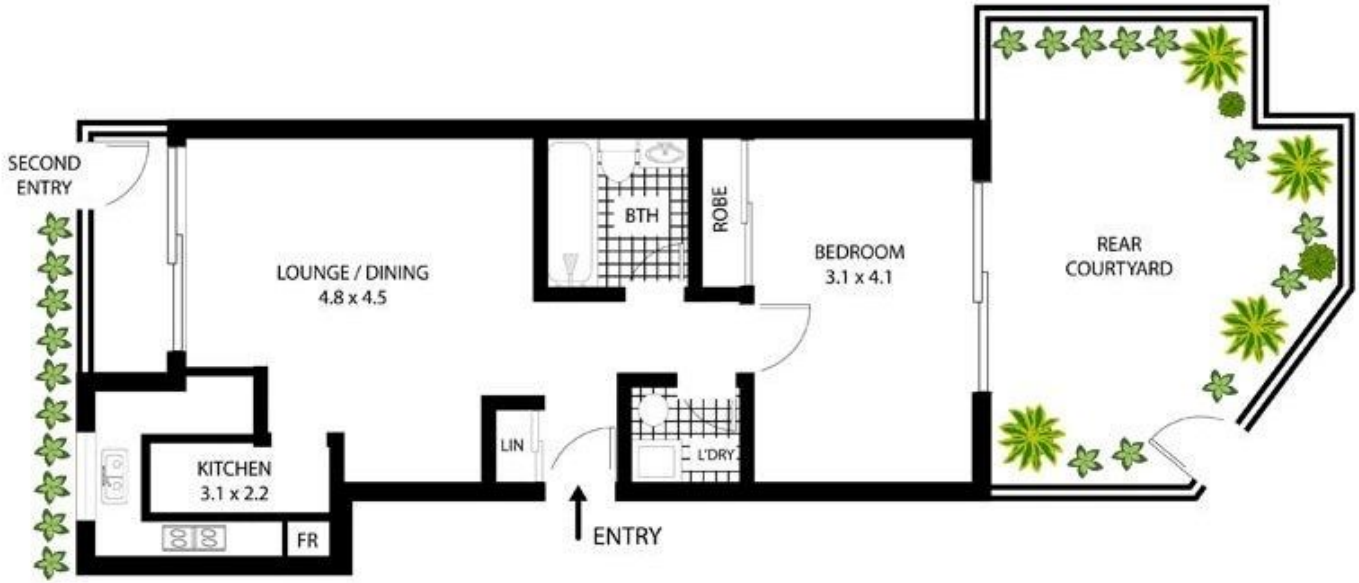
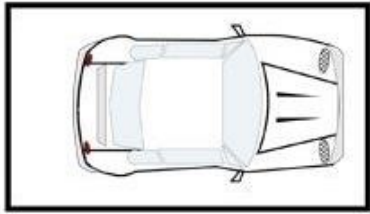


Grant Ashby
02 9241 1288

[For full version visit the website](https://www.sydneycoveproperty.com)

<https://www.sydneycoveproperty.com>

SINGLE
LOCK UP GARAGE
(on seperate title)



27/492-500 Elizabeth St Surry Hills

All measurements are approximate only. Plan is provided as an indication of layout

