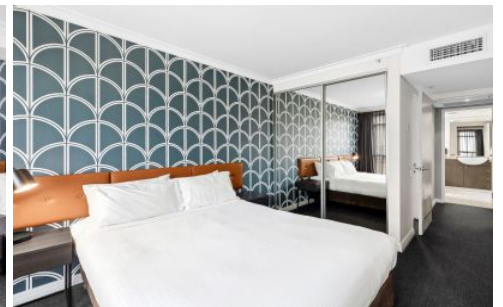


# SYDNEY COVE

PROPERTY



**302/653 George Street Sydney NSW**

**1  2 **

**INVESTMENT ONLY** (occasional use permitted)

Presenting a fantastic opportunity to own an incredible apartment located in the premier Mantra Sydney Central building run by the world-renowned Accor group, perfect for SMSF or investors looking to get themselves a city bolthole. Positioned for walk-to-everything convenience with World Square shopping complex only a 160m stroll away and easy access to Belmore Park.

- Estimated net returns of up to \$70,702.60 p/a (9.7% return) fully managed with short term leasing
- Great flexibility to short term let or lease through Mantra
- Take advantage of rapidly improving accommodation market
- Well appointed, contemporary interiors with two bathrooms

**Price** : \$ 700,000  
**Building Size** : 58 sqm  
**View** : <https://www.sydneycoveproperty.com/sale/nsw/sydney-city/sydney/residential/apartment/7933790>



**Brenden Taliana**  
**02 9241 1288**



**Bryn Fowler**  
**02 8259 3333**

<https://www.sydneycoveproperty.com>



Scale in metres. Indicative only. Dimensions are approximate. All information contained here in is gathered from sources we believe to be reliable. However, we cannot guarantee its accuracy and interested persons should rely on their own enquiries.

653 George Street, Sydney

**SYDNEY  
COVE**  
PROPERTY