

SYDNEY COVE

PROPERTY



1C/161 Kent Street Sydney NSW

1 2 1

Unrivalled luxury in the heart of the CBD is now on offer, in this sleek and sophisticated one bedroom. Located in the Stamford Marque with stunning interiors by Burley Katon Halliday, this oversize one bedroom is the ultimate city pad.

- Spacious 107sqm floor plan, east facing w/ dual entertaining balconies
- Parquetry floors throughout, marble ensuite and second powder room
- Modern open plan kitchen, quality appliances, internal laundry & air con
- Large 43sqm car space w/ storage space
- On site concierge, board room, gymnasium, heated lap pool and spa
- Short walk to Barangaroo, Circular Quay, exclusive shops

Type : Apartment
Price : \$ 1,475,000
Building Size : 107 sqm
View : <https://www.sydneycoveproperty.com/sale/nsw/sydney-city/sydney/residential/apartment/7916255>

[For full version visit the website](https://www.sydneycoveproperty.com)

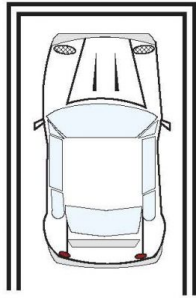


Monique Lavers
82593333

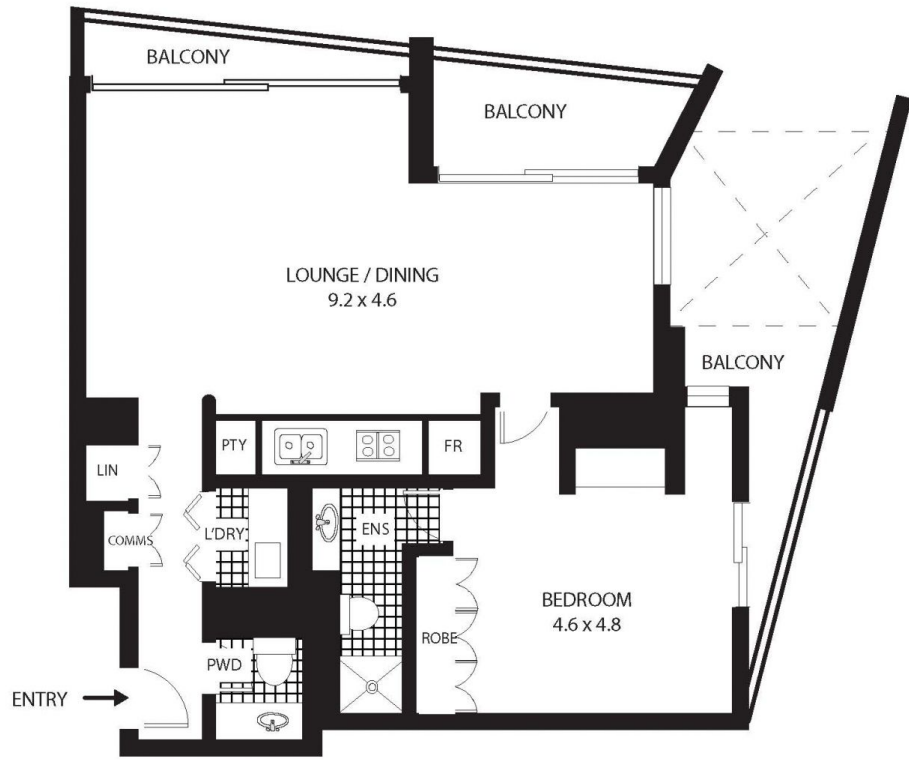


Bryn Fowler
02 8259 3333

<https://www.sydneycoveproperty.com>



SINGLE
SECURE CAR SPACE



1C/161 Kent St Sydney

All measurements are approximate only. Plan is provided as an indication of layout

