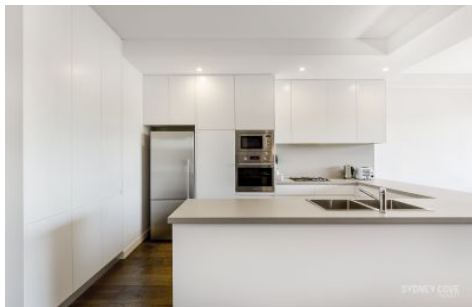


# SYDNEY COVE

PROPERTY



11/10 Pyrmont Bridge Road Camperdown NSW

1  1  1 

This beautifully renovated one-bedroom apartment is not to be missed. Located in a quite position at the rear of the building, this first-class apartment is beautifully fitted out with timber flooring and modern finishes and is within walking distance to bars, restaurants, transport and shops.

**Price** : \$ 930,000  
**Building Size** : 87 sqm  
**View** : <https://www.sydneycoveproperty.com/sale/nsw/inner-west/camperdown/residential/apartment/7903354>

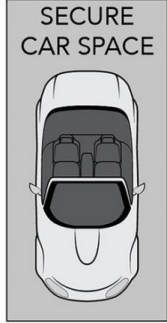
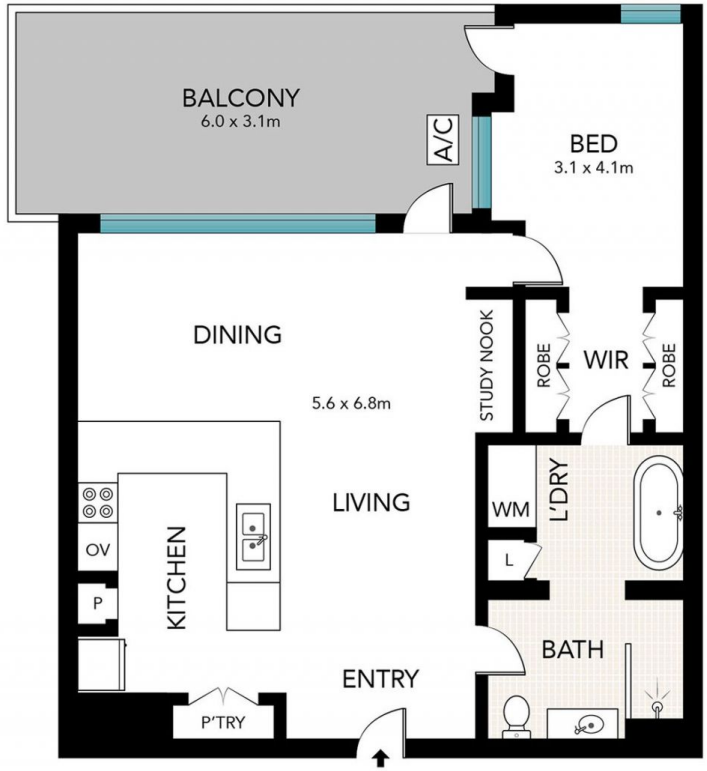
- \* Spanning 87sqm and commanding a stunning North facing position
- \* Open plan living and dining area with retractable Monarch door
- \* Loggia balcony with adjustable sliding louvres
- \* Gourmet kitchen with excellent bench space
- \* Dual entry bathroom with bath and shower
- \* City Quarter development has resort style facilities
- \* Facilities include two gyms, 25 metre & 50 metre pools and a lawn



**Monique Lavers**  
82593333



**Bryn Fowler**  
02 8259 3333



(NOT IN POSITION)



Scale in metres. Indicative only. Dimensions are approximate. All information contained here in is gathered from sources we believe to be reliable. However, we cannot guarantee its accuracy and interested persons should rely on their own enquiries.



11/10 Pyrmont Bridge Road, Camperdown

**SYDNEY COVE**  
PROPERTY