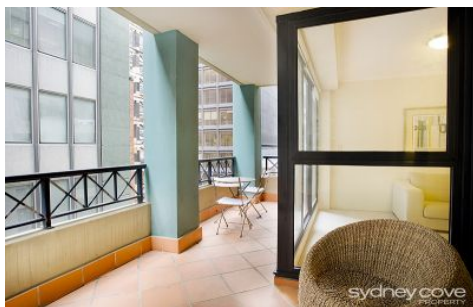


# SYDNEY COVE

PROPERTY



## 903/1-5 Hosking Place SYDNEY NSW

1 1

Unbeatable convenience, nestled between Pitt & Castlereagh Streets and moments to the best of everything Sydney has to offer, this 61m2 apartment would make an ideal investment choice as well as a fantastic city pad. Just moments away from the vibrant Martin Place, where a diverse array of bars, restaurants, cafes, and seamless transportation options await you. With high rental demand and solid future growth prospects, make this an opportune time to buy, with properties in this building previously selling in the \$700Ks & \$800Ks.

### Key Features:

- Spacious interiors to good sized balcony, entry with extra storage
- Separate double bedroom with built-ins and access to balcony

**Building Size** : 61 sqm  
**View** : <https://www.sydneycoveproperty.com/sale/nsw/sydney-city/sydney/residential/apartment/7767620>



**Bryn Fowler**  
02 8259 3333



**Monique Lavers**  
82593333

