

SYDNEY COVE

PROPERTY



3103/116 Bathurst Street Sydney NSW

2 2 1

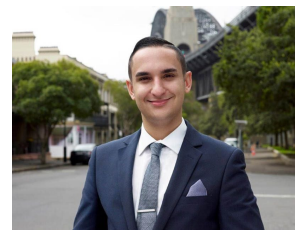
Located in The Castle Residences building, where timeless elegance and opulent living come together in this magnificent two-bedroom apartment with mesmerising views overlooking Hyde Park, the harbour and the distant cityscape. Featuring world class finishes and appliances with fantastic facilities and direct access to hotel services. Located a short distance away from Town Hall Station and Pitt St Mall.

- Far reaching views of Hyde Park, the harbour and cityscape
- Spacious and bright open plan living and dining space
- Stunning kitchen equipped with Gaggenau appliances
- Bedrooms with built-in wardrobes and fantastic views
- Two luxurious tiled bathrooms, separate internal laundry
- Access to hotel facilities, valet parking, ducted air con
- Building facilities including concierge, pool and gym

Price : \$3,950,000
Building Size : 118 sqm
View : <https://www.sydneycoveproperty.com/sale/nsw/sydney-city/sydney/residential/apartment/7737325>



Bryn Fowler
02 8259 3333



Brenden Taliana
02 9241 1288



3103/116 Bathurst St, Sydney



The information contained in this document has been provided by third parties. The agency has not checked the information and merely passes it on, not having a belief one way or the other as to its accuracy. Interested parties should make and rely upon their own enquiries.