

SYDNEY COVE

PROPERTY



901/199 Castlereagh Street Sydney NSW

1 1 1

Located in the highly sought after Victoria Towers building, this large one bedroom apartment with parking offers spacious city living with renovated interiors. Featuring a combined living/dining area with floor to ceiling glass for maximum light and views. Situated in the heart of the CBD with easy access to Town Hall Station/light rail, Pitt St Mall and World Square Shopping Centre.

- Spacious living and dining area with floorboards throughout
- Kitchen with gas cooking, dishwasher and lots of storage
- Large bedroom with built in wardrobes, ducted air con
- Modern, fully renovated bathroom and laundry area
- Secure building, intercom access and 24hr concierge
- Located a short distance to Darling Harbour and the QVB

Call Brenden Taliana on 0402 634 828 or email

Building Size : 68 sqm
View : <https://www.sydneycoveproperty.com/sale/nsw/sydney-city/sydney/residential/apartment/7703173>

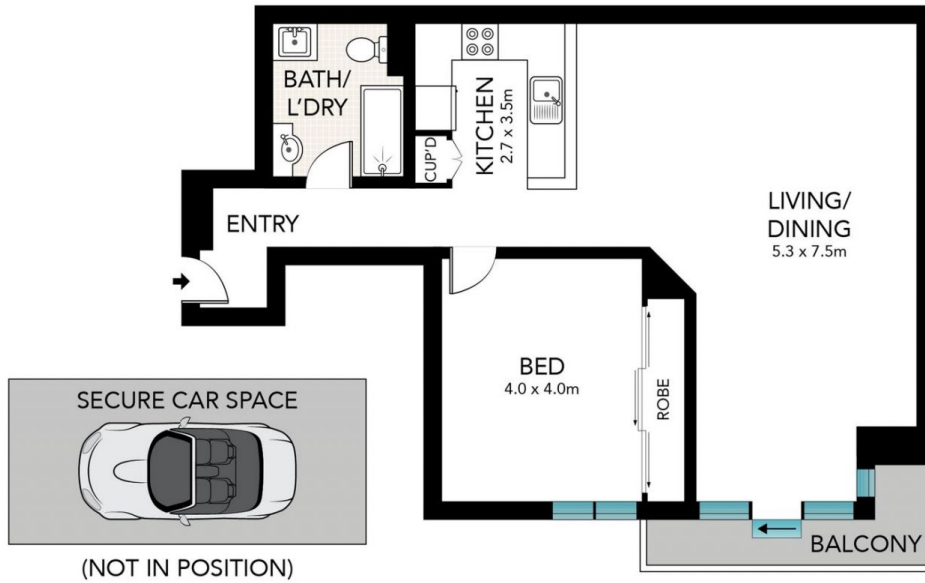


Brenden Taliana
02 9241 1288



Bryn Fowler
02 8259 3333

<https://www.sydneycoveproperty.com>



0 1 2 3 4 5



Scale in metres. Indicative only. Dimensions are approximate. All information contained here in is gathered from sources we believe to be reliable. However, we cannot guarantee its accuracy and interested persons should rely on their own enquiries.

901/199 Castlereagh Street, Sydney