

SYDNEY COVE

PROPERTY



45/37 Bay Street GLEBE NSW

1  1  1 

Oversized one bedroom apartment featuring a large balcony with expansive northern views of the city skyline and a secure front porch area. Stunning light filled interiors boasting timber flooring and an open plan renovated kitchen. Situated in a small security complex of 47 apartments, located in an unbeatable central location with easy access to Broadway Shopping Centre, University Of Sydney and Darling Harbour. The perfect apartment for those seeking space, security, and absolute convenience.

- North light filled aspect with stunning views of the city skyline
- Spacious combined living and dining area with timber flooring
- Renovated kitchen with gas cooktop, dishwasher and ample storage
- Bedroom with mirrored built in wardrobe, internal

Price : \$ 880,000
Building Size : 83 sqm
View : <https://www.sydneycoveproperty.com/sale/nsw/inner-west/glebe/residential/apartment/7695164>

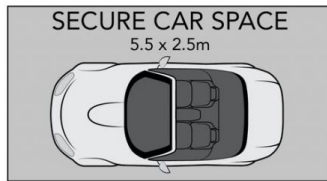
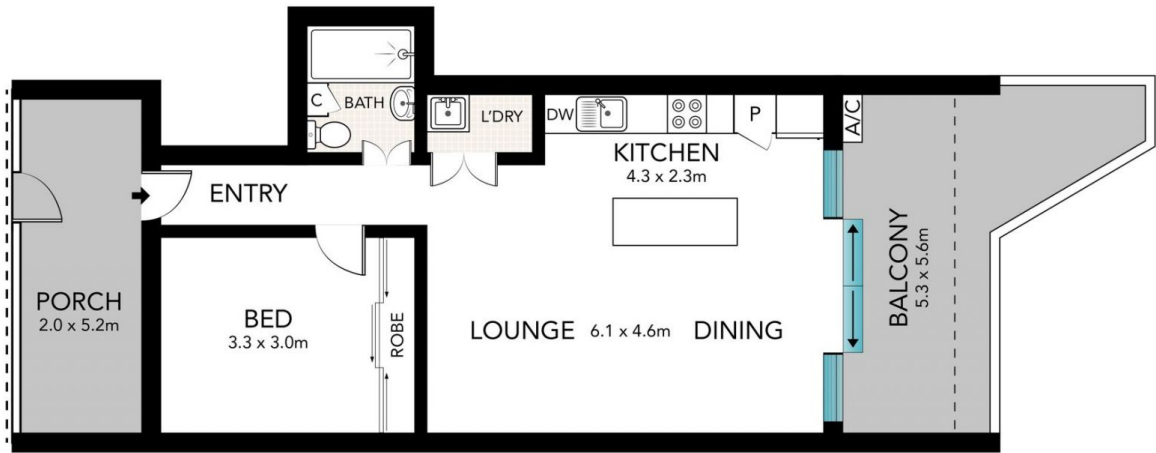


Brenden Taliana
02 9241 1288



Grant Ashby
02 9241 1288

<https://www.sydneycoveproperty.com>



(NOT IN POSITION)



Scale in metres. Indicative only. Dimensions are approximate. All information contained here in is gathered from sources we believe to be reliable. However, we cannot guarantee its accuracy and interested persons should rely on their own enquiries.

45/37 Bay Street, Glebe

**SYDNEY
COVE**
PROPERTY