

SYDNEY COVE

PROPERTY



25/222 Sussex Street Sydney NSW

2 2 1

Enjoy the energy and excitement of a vibrant city lifestyle, perfectly positioned in the popular Astoria Tower, near Darling Harbour. This huge apartment offers huge proportions with ample living areas, with plenty of scope to add value.

Price : \$ 1,520,000

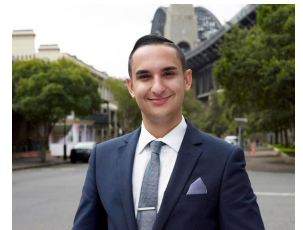
View : <https://www.sydneycoveproperty.com/sale/nsw/sydney-city/sydney/residential/apartment/7632580>

Key Points:

- Well-proportioned open design with lots of natural light
- Spacious living area and formal dining area
- Enclosed sunroom with access to open balcony
- Expansive gourmet kitchen with quality appliances
- Two double bedrooms with built-in wardrobes
- Modern bathrooms, ensuite with large spa bath
- Internal laundry, ducted A/C and intercom entry
- Concierge, pool, gym, games room & squash court
- Strata: \$2,248 p/q, Council: \$310 p/q, Water: \$165 p/q



Bryn Fowler
02 8259 3333



Brenden Taliana
02 9241 1288

<https://www.sydneycoveproperty.com>