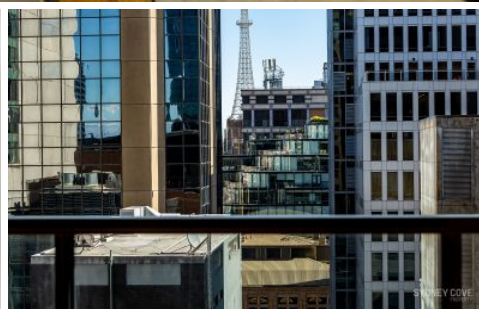


SYDNEY COVE

PROPERTY



1 Hosking PI SYDNEY NSW

Centrally located in the "Aston" apartment building, this one bedroom apartment is located only a short walk to Martin place with bars, restaurants, cafe's and transport at your doorstep.

Key points:

- * Large open & spacious floor plan
- * Stone kitchen and gas appliances
- * Entertainers balcony off loungeroom
- * Double bedroom with built in robes
- * Tiled bathroom, Internal Laundry, AC
- * Onsite concierge, Lift access, Intercom

1  1 

View : <https://www.sydneycoveproperty.com/lease/nsw/sydney-city/sydney/residential/apartment/7587581>



Cherie Xue
02 9241 1288



Gareth Bootland
02 8259 3333