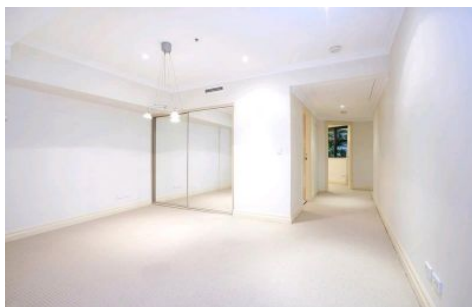


SYDNEY COVE

PROPERTY



2 Bond St SYDNEY NSW

1 1 1

Positioned in the centre of the atmospheric CBD, this spacious apartment is part of the popular 'Mantra' building on George Street. A hive of convenience, this central pad is surrounded by all the excitement of the busy city, with buses, trains, restaurants & bars all within moments of your door.

View : <https://www.sydneycoveproperty.com/lease/nsw/sydney-city/sydney/residential/apartment/7556872>

Key Points

- * Impressive layout, with unique floorplan
- * Large stone kitchen, quality appliances
- * Double bedroom & separate study area
- * Modern stone bathrooms, luxury finish
- * Air-con, internal laundry, video intercom
- * Access to hotel amenities incl. concierge
- * Impressive roof top pool, spa and gym
- * Single car space



Cherie Xue
02 9241 1288



Gareth Bootland
02 8259 3333

<https://www.sydneycoveproperty.com>