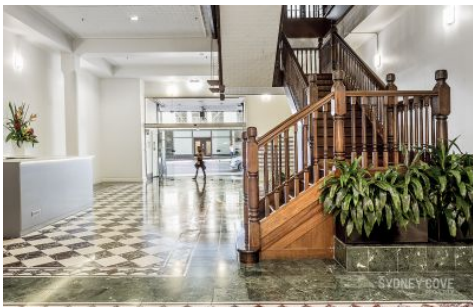


SYDNEY COVE

PROPERTY



2502/148 Elizabeth Street SYDNEY NSW

2 **2** **1**

We are proud to present apartment 2502 located in the sought after Hyde Park Towers building, which was sold off market for a fantastic result. If you are considering selling and would like to know how we can better assist you in achieving an amazing result, please contact Brenden Taliana on 0402 634 828 or brenden@sydneycoveproperty.com.

The apartment features a large floorplan with an oversized balcony and wintergarden, and showcases high western views overlooking the cityscape. Located moments away from Hyde Park, World Square shopping centre and only a 150m stroll to Museum Station.

- Large balcony and wintergarden with high city views
- Spacious, open plan combined living and dining room
- Two bedrooms both featuring built in wardrobes

Price : \$ 1,125,000

View : <https://www.sydneycoveproperty.com/sale/nsw/sydney-city/sydney/residential/apartment/7553956>



Brenden Taliana
02 9241 1288



Bryn Fowler
02 8259 3333

<https://www.sydneycoveproperty.com>