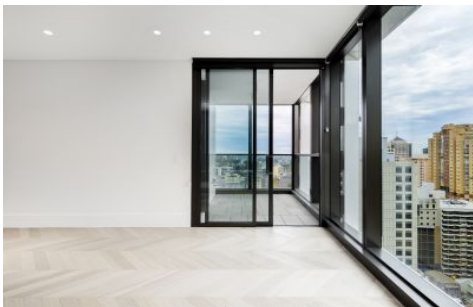


SYDNEY COVE

PROPERTY



130 Elizabeth Street Sydney NSW

2 1

This first-class building is located in the epicentre of the CBD, providing a world class living experience. This 2 bedroom apartment comes fully furnished and has been beautifully fitted with solid Herringbone timber flooring, modern finishes and large floor to ceiling glass windows. The apartment is opposite Hyde Park, Museum Station, shops, restaurants, cafes and bars. This apartment has lovely views of Botany Bay and the city skyline. The apartment also has access to a communal BBQ area, and a fully fitted gym.

Key points:

- Open plan living/dining with large floor to ceiling glass windows
- Beautifully furnished throughout, two bedrooms both with built in robes
- State-of the art gas kitchen, Carrera marble & integrated

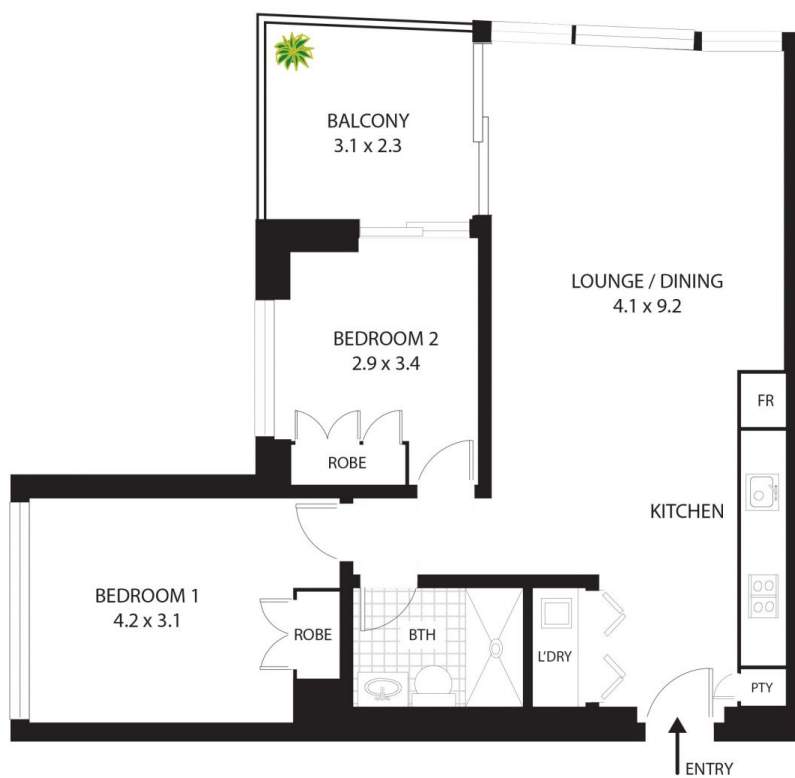
View : <https://www.sydneycoveproperty.com/lease/nsw/sydney-city/sydney/residential/apartment/7552454>



Cherie Xue
02 9241 1288



Gareth Bootland
02 8259 3333



2504/130 Elizabeth St, Sydney



All measurements are approximate only.
Plan is provided as an indication of layout