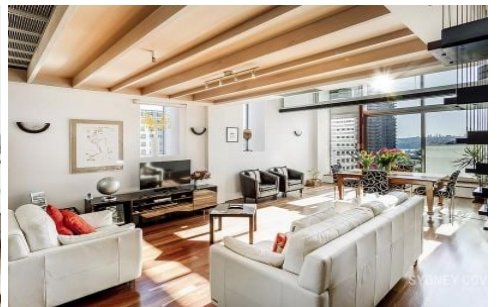


SYDNEY COVE

PROPERTY



2 York St SYDNEY NSW

2 2 1

Wonderful north facing, two level apartment in the unique Portico building. Created from the old Scotts Church this landmark development offers a combination of historical and modern touches whilst being located in a prime CBD position with shops, cafes, transport, the Rocks and Circular Quay all within a close proximity.

Features include:

- Spacious, north facing apartment with views
- Double vaulted ceilings & floor to ceiling glass
- Large modern kitchen area with island bench
- Two double bedrooms, loft style apartment
- Chic limestone bathroom, master with ensuite
- Private winter garden, Air-cond & internal laundry
- Polished floor, 24 hour concierge, lift access
- Car stacker space for car's height 1.6 meters or below

Building Size : 118 sqm
View : <https://www.sydneycoveproperty.com/lease/nsw/sydney-city/sydney/residential/apartment/7496573>



Cherie Xue
02 9241 1288



Gareth Bootland
02 8259 3333

<https://www.sydneycoveproperty.com>