

# SYDNEY COVE

PROPERTY



**1305/38 College Street DARLINGHURST NSW**

1 🏠 1 🚗

Truly a one of a kind apartment, featuring stunning fully renovated interiors and breathtaking views overlooking Hyde Park, the city and beyond. This is the perfect place to call home or to capitalise on big net returns with short term leasing. Situated high up on level 13 in the prominent Hyde Park Plaza building, you are only a short 240m stroll to Museum Station and on the cusp of the bustling Oxford Street precinct.

**View** : <https://www.sydneycoveproperty.com/sale/nsw/eastern-suburbs/darlinghurst/residential/apartment/7443773>

- Estimated short term leasing returns of up to \$50,000 per year net
- Flexible apartment with options to short or long-term lease, or move in yourself
- Extraordinary views of Hyde Park, the expansive city skyline and beyond
- Beautiful, high quality renovated interiors throughout the apartment

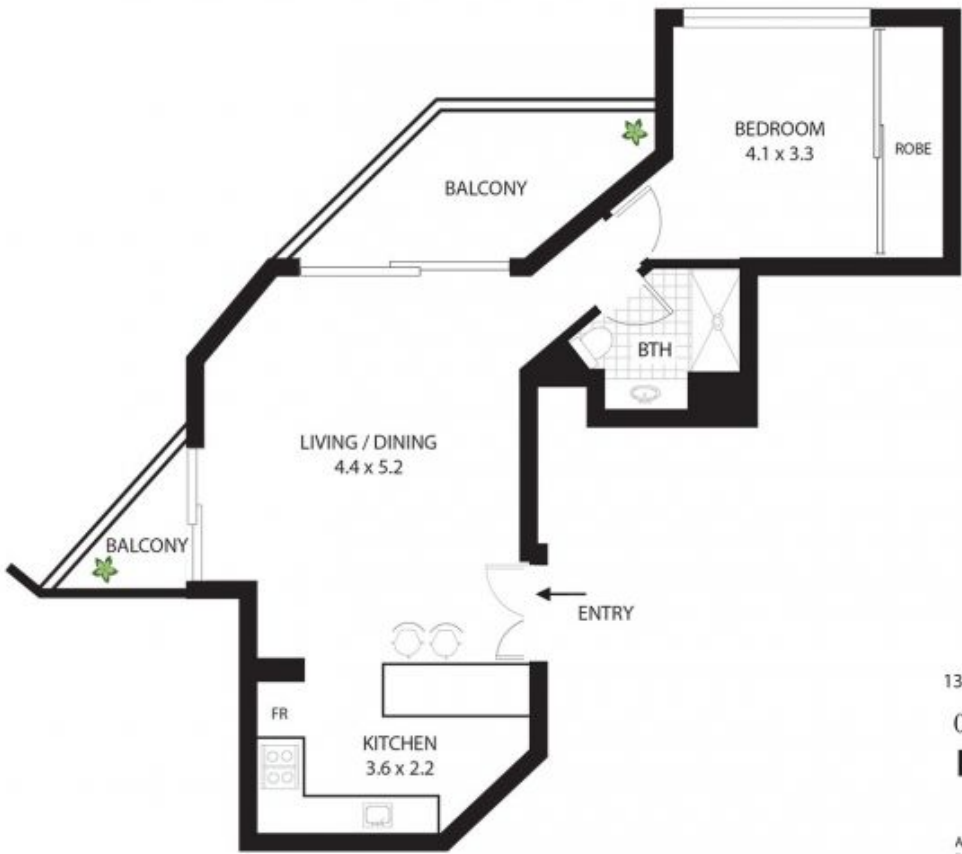


**Bryn Fowler**  
02 8259 3333



**Brenden Taliana**  
02 9241 1288

<https://www.sydneycoveproperty.com>



1305/38 College Street Sydney



SCALE

All measurements are approximate only.  
Plan is provided as an indication of layout