

SYDNEY COVE

PROPERTY

Photo of similar apartment



Photo of similar apartment



Photo of similar apartment

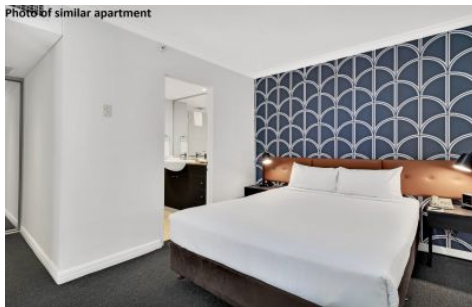


Photo of similar apartment



508/653 George Street Sydney NSW

1 2

Presenting a fantastic opportunity to own an incredible apartment located in the premier Mantra Sydney Central building run by the world-renowned Accor group, perfect for SMSF or investors looking to get themselves a city bolthole. Positioned for walk-to-everything convenience with World Square shopping complex only a 160m stroll away and easy access to Belmore Park.

- Guaranteed net income of \$29,480.72 p/a with Mantra lease (guaranteed 4.2% net return)
- Potential to exit lease & short term let for estimated net returns of up to \$71,000 p/a (10.2% net return)
- Great flexibility to short term let or lease through Mantra
- Take advantage of rapidly improving accommodation market
- Well appointed, contemporary interiors with two balconies

Price : \$ 680,000

View : <https://www.sydneycoveproperty.com/sale/nsw/sydney-city/sydney/residential/apartment/7422475>

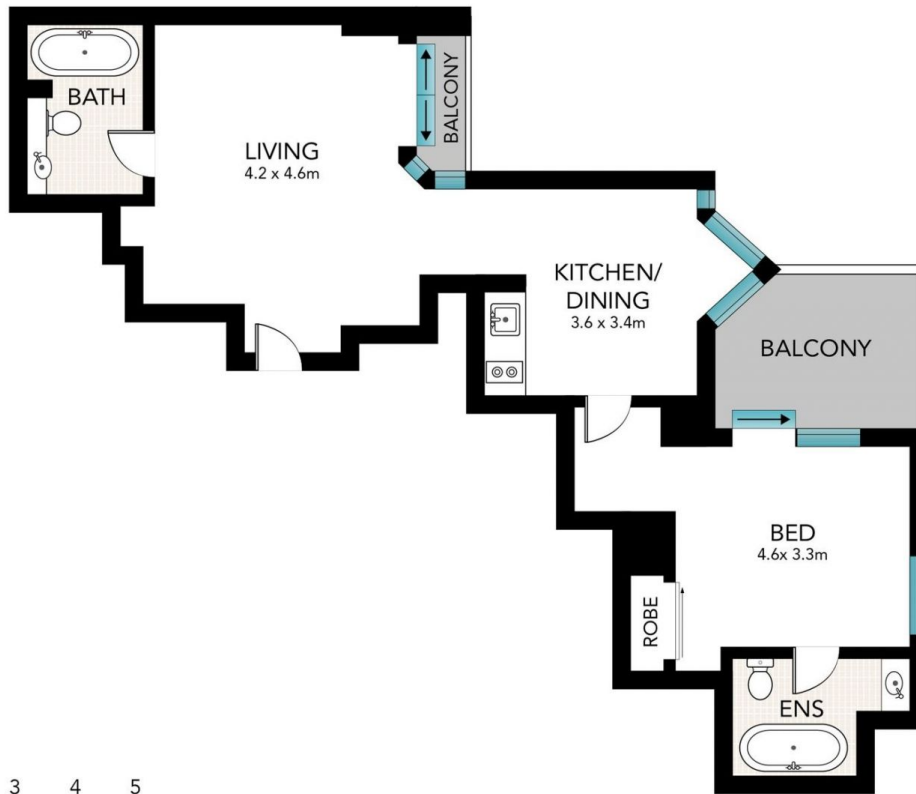


Brenden Taliana
02 9241 1288



Bryn Fowler
02 8259 3333

<https://www.sydneycoveproperty.com>



0 1 2 3 4 5

Scale in metres. Indicative only. Dimensions are approximate. All information contained here in is gathered from sources we believe to be reliable. However, we cannot guarantee its accuracy and interested persons should rely on their own enquiries.

653 George Street, Haymarket



**SYDNEY
COVE**
PROPERTY