




SYDNEY COVE

PROPERTY



101/5-9 Harbourview Crescent MILSONS POINT NSW

4  **4**  **2** 

A supremely spacious design and panoramic Lavender Bay views ensure this exclusive, private and luxury residence has lots of appeal for those looking for a house-sized home with all the advantages of apartment living. It ticks all the boxes for immediate lifestyle enjoyment with indoor/outdoor flow and a huge terrace for entertaining. It's even further enhanced by its premium cul-de-sac position within the exclusive Halcyon harbourside complex that's footsteps to Wendy Whiteley's Secret Garden, Milsons Point station, local shops and cafés.

Key Points:

- Featuring an expansive 332sqm in/outdoor of luxury living, with huge terrace, around 50m2 approximately
- Elevated aspect that showcases sparkling views over boat-filled Lavender Bay

Price : \$ 6,275,000

View : <https://www.sydneycoveproperty.com/sale/nsw/north-shore-lower/milsons-point/residential/apartment/7372221>

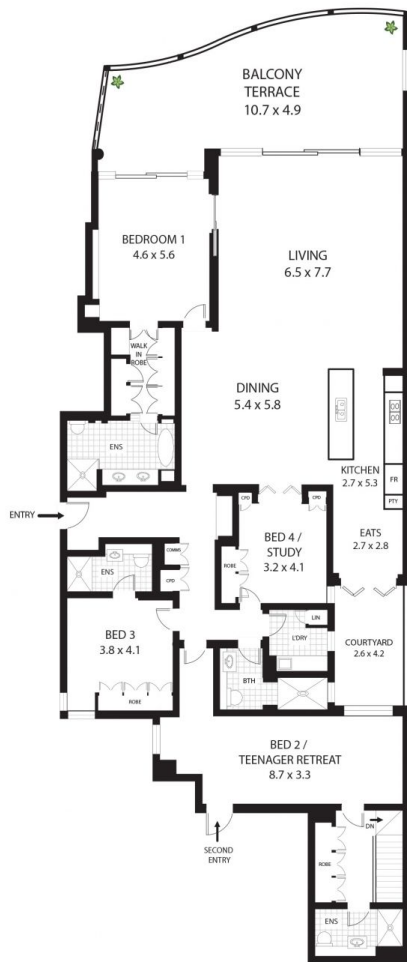


Bryn Fowler
02 8259 3333

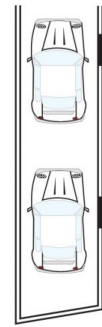


Monique Lavers
82593333

<https://www.sydneycoveproperty.com>



(LOWER LEVEL)



SECURE
TANDEM PARKING



101/5-9 Harbourview Cres, Milsons Point



All measurements are approximate only.
Plan is provided as an indication of layout