

SYDNEY COVE

PROPERTY



168 Kent Street Sydney NSW

1 🛏 1 🍳 1 🚗

Enjoy this elegant, furnished apartment in the tightly held 'Observatory Tower' positioned the heart of Kent Street Village. Featuring stunning views of the CBD and Western Harbour this popular apartment is moments to shops, Transport, the CBD as well as the areas fantastic restaurants and lifestyle.

View : <https://www.sydneycoveproperty.com/lease/nsw/sydney-city/sydney/residential/apartment/7332850>

Key Points:

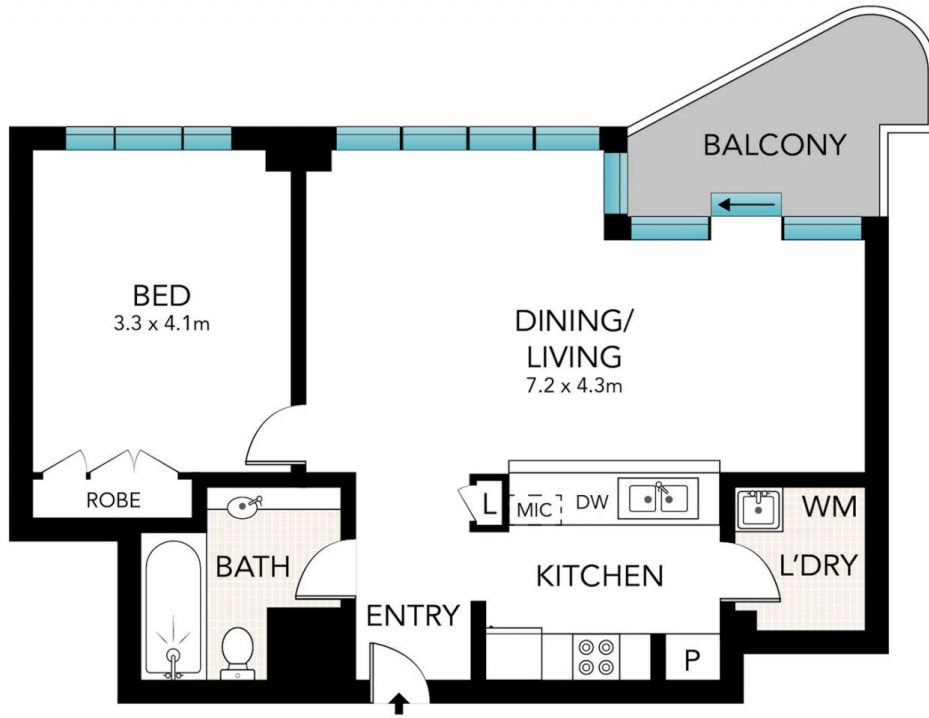
- * Spacious, open plan living area with views
- * Gourmet kitchen with quality appliances
- * Large, bright bedroom, built in wardrobes
- * Luxury bathroom with bath tub & shower
- * Generous balcony overlooking the Harbour
- * Laundry, A/C, lift access, intercom, car space
- * 24/H concierge, indoor pool, gym & library



Cherie Xue
02 9241 1288



Gareth Bootland
02 8259 3333



Scale in metres. Indicative only. Dimensions are approximate. All information contained here in is gathered from sources we believe to be reliable. However, we cannot guarantee its accuracy and interested persons should rely on their own enquiries.

1507/168 Kent Street, Sydney

**SYDNEY
COVE**
PROPERTY