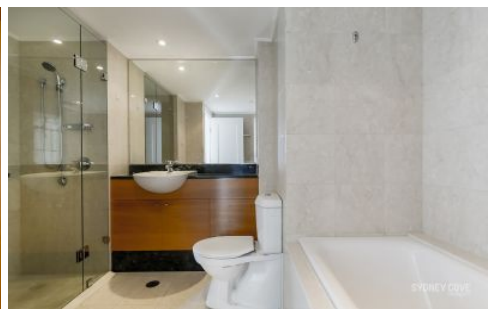


# SYDNEY COVE

PROPERTY



68-70 Market St SYDNEY NSW

1 1 1

Positioned on a high level with a westerly aspect, featuring impressive & expansive views, this wonderful apartment in one of the most prestigious buildings in the CBD, The Tower. With a mid-city position above the luxury Swissotel Hotel, you will be surrounded by some of the best shopping, transport and dining options in Sydney.

**View** : <https://www.sydneycoveproperty.com/lease/nsw/sydney-city/sydney/residential/apartment/7303968>

## Key Points

- \*Stunning far reaching westerly city Views, fantastic natural light
- \*Well proportioned, practical floorplan with good sized balcony
- \*Beautiful deluxe bathroom with separate shower & bath tub
- \*Ducted air conditioning throughout, video security intercom



**Cherie Xue**  
02 9241 1288



**Gareth Bootland**  
02 8259 3333