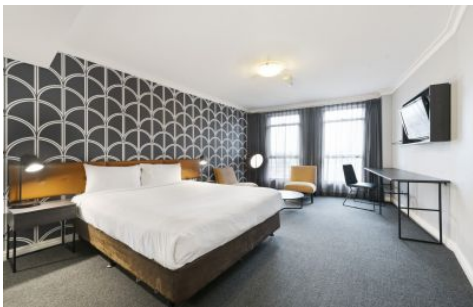


SYDNEY COVE

PROPERTY



908/653 George Street SYDNEY NSW



View : <https://www.sydneycoveproperty.com/sale/nsw/sydney-city/sydney/residential/studio/7247594>

Presenting a fantastic opportunity to own an incredible serviced apartment located in the premier Mantra Sydney Central building run by the world-renowned Accor group, perfect for SMSF or investors looking to get themselves a city bolthole. Positioned for walk-to-everything convenience with World Square shopping complex only a 160m stroll away and easy access to Belmore Park.

- Potential to enjoy highly lucrative future rental returns
- Flexibility to short term let yourself or through Mantra
- With Mantra option, owner can use for 14 days each year
- Take advantage of rapidly improving accommodation market
- Well appointed, contemporary interiors with expansive city views
- Centrally located building, 24hr concierge, on-site restaurant



Brenden Taliana
02 9241 1288



Bryn Fowler
02 8259 3333