

# SYDNEY COVE

PROPERTY



## 2018/91 Liverpool Street SYDNEY NSW

1 1

**View :** <https://www.sydneycoveproperty.com/sale/nsw/sydney-city/sydney/residential/apartment/7224517>

Set up high in one of Sydney's most iconic residential buildings, this 'World Tower' apartment delivers a vibrant inner-city lifestyle with captivating skyscraper outlooks. It combines bright breezy interiors, smart modern finishes and premium resort amenities to deliver a quality home or investment prospect in the heart of the city. This exceptional CBD location is within a stroll to all the attractions that make Sydney so popular with restaurants, Hyde Park, Chinatown and train stations all within a stroll from the front door.

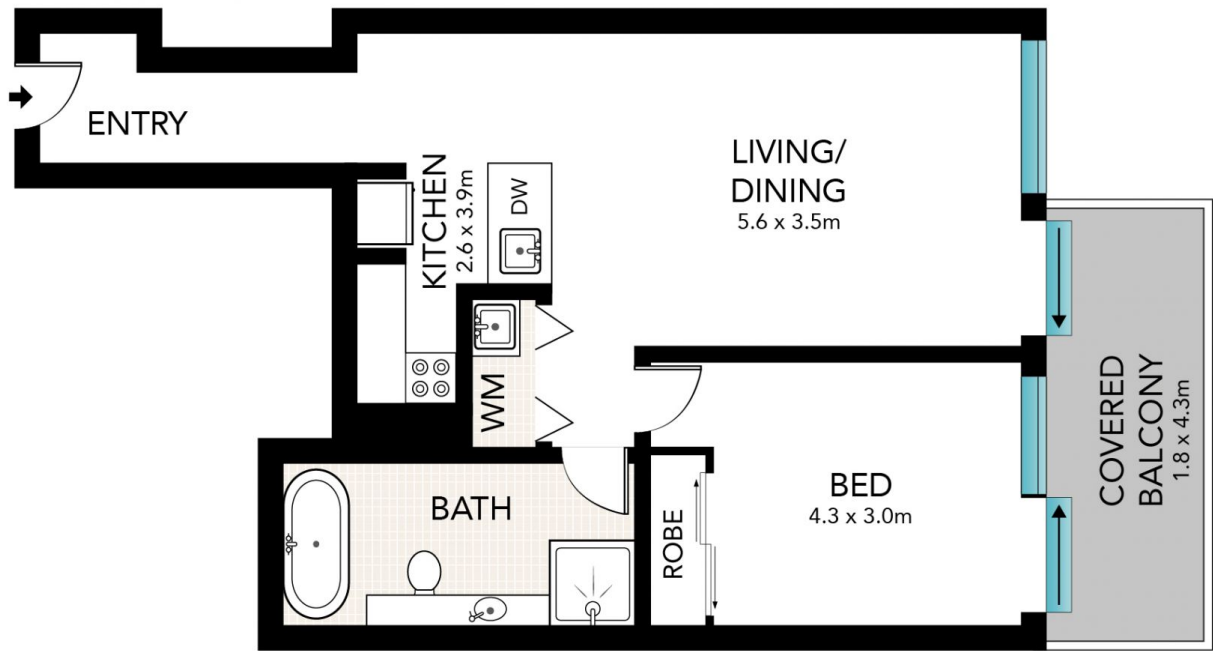
- A bright easterly aspect and energetic cityscape surrounds
- Generous 63sqm layout with a good-sized open plan design
- A sunny balcony that leads off the living space and bedroom



**Monique Lavers**  
82593333



**Brenden Taliana**  
02 9241 1288



Scale in metres. Indicative only. Dimensions are approximate. All information contained here in is gathered from sources we believe to be reliable. However, we cannot guarantee its accuracy and interested persons should rely on their own enquiries.

2018/91 Liverpool Street, Sydney

**SYDNEY  
COVE**  
PROPERTY