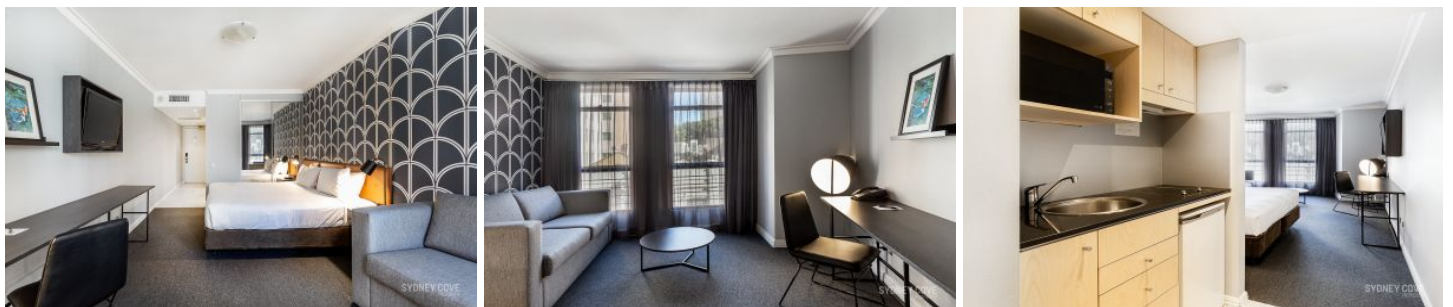


# SYDNEY COVE

PROPERTY



**206/653 George Street SYDNEY NSW**

**1** 

Presenting a fantastic opportunity to own an incredible serviced apartment located in the premier Mantra Sydney Central building, perfect for SMSF or investors looking to earn great returns. Positioned for walk-to-everything convenience with World Square shopping complex only a 160m stroll away and easy access to Belmore Park.

- Estimated net returns of 10% - 15% with short term leasing
- Enjoy huge rental returns (either Airbnb or through a specialised agency)
- Comparable apartments achieving approximately \$250 per night through Airbnb
- Take advantage of rapidly improving accommodation market
- Well appointed, contemporary interiors with city views
- Centrally located building, with 24 hour concierge

**Price** : \$ 372,000

**View** : <https://www.sydneycoveproperty.com/sale/nsw/sydney-city/sydney/residential/studio/7170710>



**Brenden Taliana**  
02 9241 1288



**Bryn Fowler**  
02 8259 3333

<https://www.sydneycoveproperty.com>



206/653 George Street, Sydney



SCALE

All measurements are approximate only.  
Plan is provided as an indication of layout