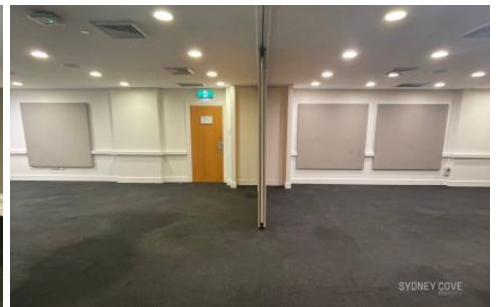
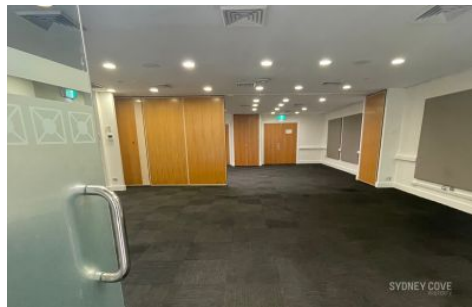


SYDNEY COVE

PROPERTY



96 Gloucester Street SYDNEY NSW

This 96 sqm space is situated underneath The Sebel Quay West Suites and opposite the Shangri-La. There is a possibility for this suite to be used as a retail shop with direct access from Gloucester Street and with solid street presence this space is all on 1 level making use of space easy.

- The Rocks location with heavy foot traffic from surrounding hotels
- All on the ground level which makes ample use of the space
- Use of hotel/apartment block facilities and common areas
- Several uses for this space makes the possibilities endless
- Close to Wynyard, Barangaroo & Circular Quay Stations

Please contact Gareth from Sydney Cove Commercial for

Price : \$895 Psqm
Building Size : 96 sqm
View : <https://www.sydneycoveproperty.com/lease/nsw/sydney-city/sydney/commercial/offices/6992365>



Gareth Bootland
02 8259 3333

<https://www.sydneycoveproperty.com>