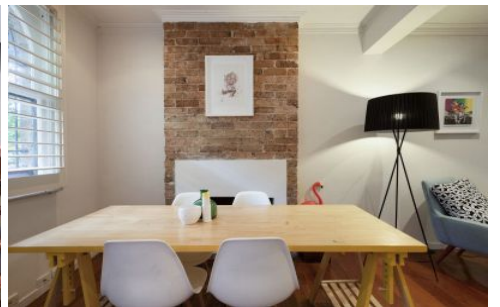
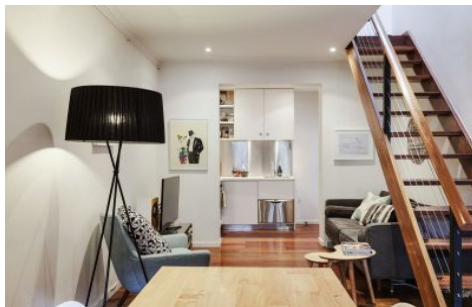


SYDNEY COVE

PROPERTY



1 Short Street PADDINGTON NSW

1 1

A rare 'laneway' home in a fantastic inner city location, this vibrant, urban terrace is nestled in tree lined oasis. Featuring a designer renovation mixed with charming terrace character this home is like no other.

View : <https://www.sydneycoveproperty.com/lease/nsw/eastern-suburbs/paddington/residential/house/6971150>

Key points

- * Impressively renovated throughout
- * Character filling, charming façade
- * Corian stainless steel gas kitchen
- * Open plan living + study (2nd floor)
- * Ensuite style bathroom with bath
- * Large bedroom with built-in robe
- * Close to cafes, pubs, parks & dining
- * Up to 2 street parking permits via City of Sydney Council

Suitable for pets (upon application)



Cherie Xue
02 9241 1288