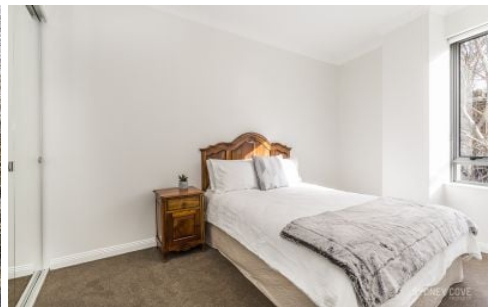


# SYDNEY COVE

PROPERTY



## 708/38 Bridge Street SYDNEY NSW

1 1

This beautifully presented, fully furnished apartment is situated in the popular 'Bridgeport' building, located only 300 metres away from Sydney Harbour. Bridgeport benefits hugely from its position in the exciting new Quay Quarter neighbourhood, with Quay Quarter Lanes cafes, restaurants, and retail offerings enhancing the lifestyle and community around the Circular Quay area.

Apartment 708 is an exceptional city pad or investment opportunity, with current rental potential up to \$620-\$640 per week due to the recent bounce back in tenant demand and its highly desirable location.

Boasting tranquil views over tree-lined Macquarie Place Park, and plenty of natural light, this apartment is definitely one to inspect and one of the most desired one bed

**Type** : Apartment

**Price** : \$ 725,000

**View** : <https://www.sydneycoveproperty.com/sale/nsw/sydney-city/sydney/residential/apartment/6970787>



**Bryn Fowler**  
02 8259 3333



**Monique Lavers**  
82593333

[For full version visit the website](https://www.sydneycoveproperty.com)

<https://www.sydneycoveproperty.com>



# 38 Bridge St Sydney

All measurements are approximate only. Plan is provided as an indication of layout

