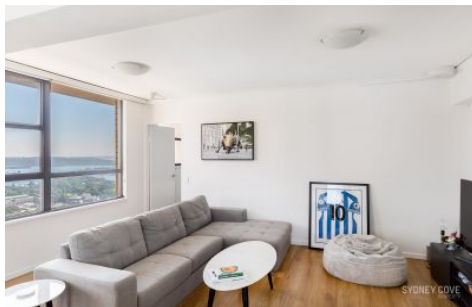


SYDNEY COVE

PROPERTY



27 Park Street SYDNEY NSW

2 2 1

Perched up high in a premium 40th floor position in the Park Regis tower, this potential-packed apartment offers a great inner-city living experience right in the heart of the CBD. It combines bright breezy interiors, a large flexible floorplan and spectacular panoramas over the harbour to deliver a quality home or investment prospect. There is also plenty of potential to get creative and add some value with a modern update or redesign to take full advantage of its space, aspect and location.

- Panoramas stretch over the city and harbour to North Head
- North-facing windows maximise natural light and outlooks
- Flexible modular layout that can be reconfigured to suit needs

Type : Apartment

View : <https://www.sydneycoveproperty.com/sale/nsw/sydney-city/sydney/residential/apartment/6841616>



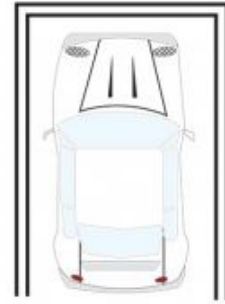
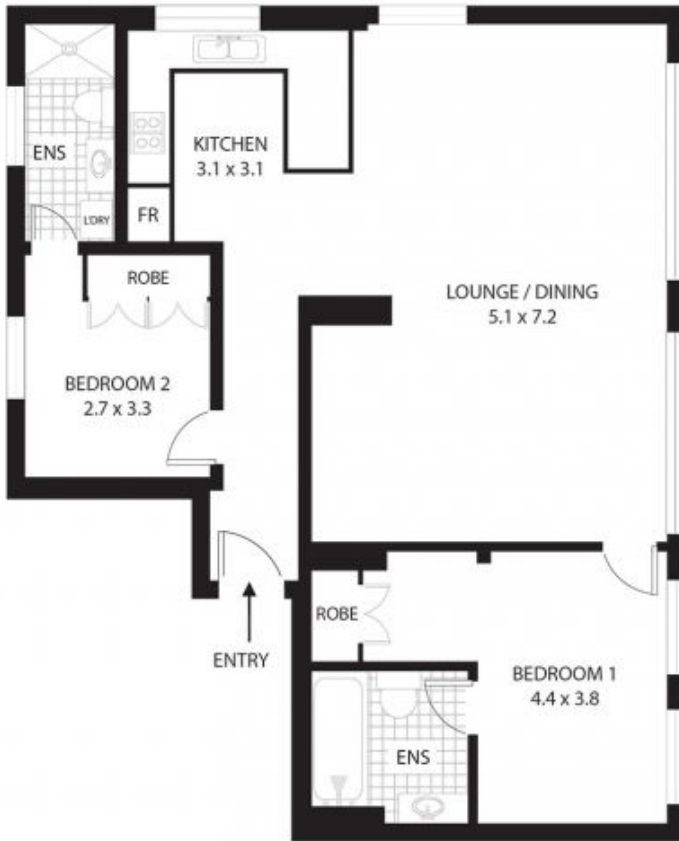
Monique Lavers
82593333



Bryn Fowler
02 8259 3333

[For full version visit the website](https://www.sydneycoveproperty.com)

<https://www.sydneycoveproperty.com>



SINGLE
SECURE CAR SPACE



27 Park St, Sydney



All measurements are approximate only.
Plan is provided as an indication of layout