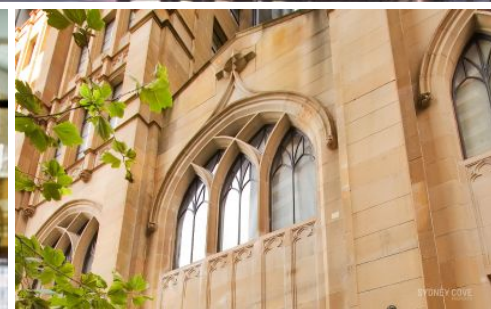
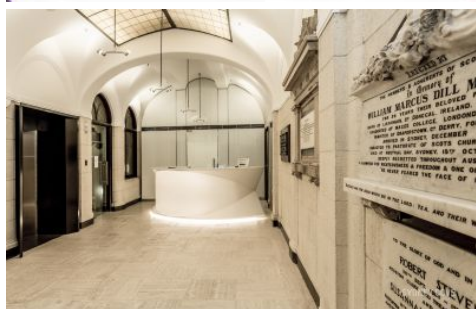


SYDNEY COVE

PROPERTY



2 York St SYDNEY NSW

This beautifully presented apartment is set over two levels the impressive 'Portico' building. With dramatic high ceilings, an abundance of light this apartment offers a combination of historical and modern touches whilst being located in a prime CBD position with shops, cafes, transport, The Rocks and Circular Quay all within a close proximity.

Key Points:

- * Spacious, south west facing apartment with views
- * Double vaulted ceilings and floor to ceiling glass
- * Sleek kitchen with stainless steel alliances
- * Chic limestone bathroom, internal laundry
- * Ducted Air-cond, jarrah polished floorboards
- * Polished floor, intercom entry & secure access
- * 24 hour concierge, lift access, security access

1 1

View : <https://www.sydneycoveproperty.com/lease/nsw/sydney-city/sydney/residential/apartment/6809035>



Kayla Caldwell
02 9241 1288