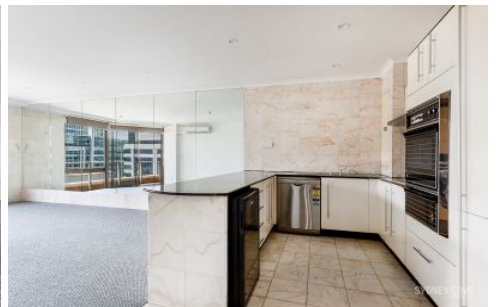


SYDNEY COVE

PROPERTY



25 Market St SYDNEY NSW

1 1

Positioned on the top floor with a northern aspect, this light filled apartment enjoys commanding views over the Sydney CBD & towards Darling Harbour. Recently updated with paint & carpet this apartment is located in heart of the CBD, only walking distances to the many top restaurants, bars and shopping hubs whilst having access to the city's best transport.

Key Points:

- Northern aspect with views of Darling Harbour & the CBD
- Large 70sqm floorplan featuring well sized expansive balcony
- Spacious tiled bathroom including bathtub and internal laundry
- Bedroom with built in wardrobe, balcony access and air con

View : <https://www.sydneycoveproperty.com/lease/nsw/sydney-city/sydney/residential/apartment/6722690>



Cherie Xue
02 9241 1288