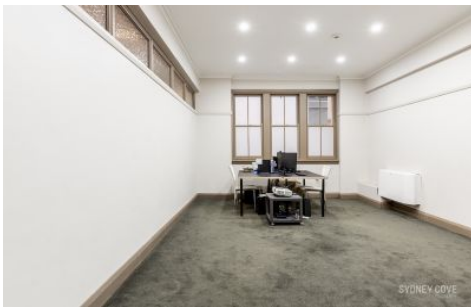


# SYDNEY COVE

PROPERTY



## 147 King Street SYDNEY NSW

Located opposite the MLC centre and with neighbouring flagship retail stores such as Hermes, Bvlgari, Chanel and much more the positioning close to public transport and amenities is second to none.

- 24sqm of GLA, appropriate for many uses
- Heritage building with a smart feel,
- Shared updated bathrooms on each floor
- 3 Large windows, with an abundance of natural light
- Multiple internet and power connections
- Located on Level 3 with lift access
- Solid tenant in place

Contact Gareth from Sydney Cove Commercial now on 0422 247 973

**Price** : INVITING OFFERS  
**Building Size** : 24 sqm  
**View** : <https://www.sydneycoveproperty.com/sa/nsw/sydney-city/sydney/commercial/offices/6565826>



**Gareth Bootland**  
02 8259 3333



**Grant Ashby**  
02 9241 1288