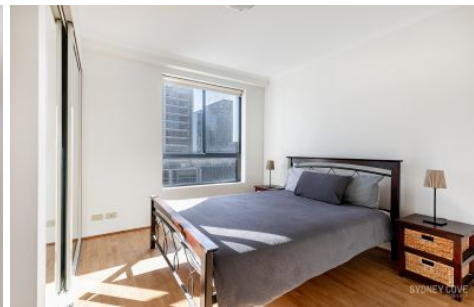
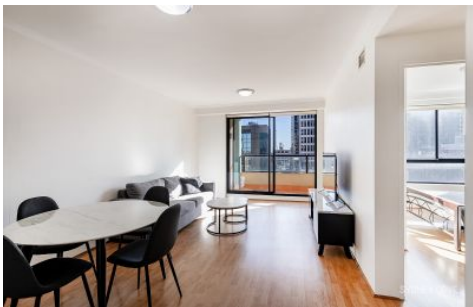


SYDNEY COVE

PROPERTY



1 Hosking Place SYDNEY NSW

With one of the best floorplan in the building and immaculately presented, this large one bedroom apartment would be an ideal city pad. With fantastic city views from its balcony, light and airy interiors and great layout this apartment is an absolute must to inspect.

Key Points:

- * Spacious, Lounge & dining areas off kitchen
- * One Large balcony with city sweeping views
- * Large modern gas kitchen, quality appliances
- * Double bedroom, walk in robe balcony access
- * Modern ensuite style bathroom off main bedroom
- * Separate internal laundry with dryer, Ducted A/C

1 1

View : <https://www.sydneycoveproperty.com/lease/nsw/sydney-city/sydney/residential/apartment/642409>
1



Kayla Caldwell
02 9241 1288



Gareth Bootland
02 8259 3333