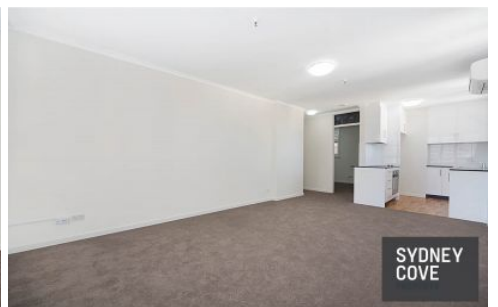


# SYDNEY COVE

PROPERTY



## 27 Park Street SYDNEY NSW

1 1 1

Situated in the in the "Park Regis" building this centrally located apartment has been recently renovated throughout. Walking distance to shops, bars, restaurants and public transport this apartment has it all.

**View** : <https://www.sydneycoveproperty.com/lease/nsw/sydney-city/sydney/residential/apartment/6368142>

### Key Points:

- \* Open plan lounge and dining area
- \* North facing, sweeping city views
- \* Renovated throughout, Split A/C
- \* Double bedroom with built in robe
- \* Single car space, Secure building



**Gareth Bootland**  
02 8259 3333



**Kayla Caldwell**  
02 9241 1288