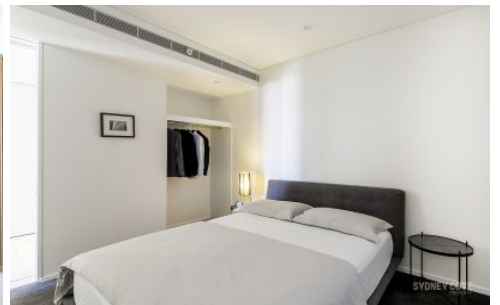
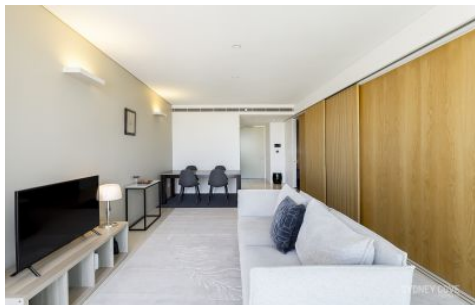


SYDNEY COVE

PROPERTY



3 Carlton Street CHIPPENDALE NSW

2 1 1

Available is this sophisticated, open plan, two bedroom apartment in One Central Park. Immaculately presented and located on a high floor, this apartment commands excellent easterly views towards the city. One Central Park is a stunning development extending beyond the apartment with incredible amenities, featuring a unique vertical garden, a shopping centre with bars & restaurants, pool, gym, concierge and is conveniently positioned metres from Central Station, Broadway, UTS and the CBD.

Features include:

- Interiors crafted by Award-Winning designers
- Open living area with movable feature walls
- Designer smart kitchen, stone & timber finishes
- Striking tiled flooring, floor to ceiling windows
- Chic, luxurious bathroom with unique finish

View : <https://www.sydneycoveproperty.com/lease/nsw/sydney-city/chippendale/residential/apartment/6313654>



Cherie Xue
02 9241 1288



Kayla Caldwell
02 9241 1288