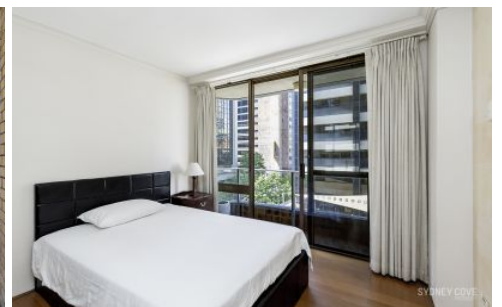


SYDNEY COVE

PROPERTY



25 Market Street SYDNEY NSW

Located in one of the central CBD's most popular buildings is this large two bedroom apartment in 'The Berkeley'. With timber flooring & a spacious design, this apartment offers a rare opportunity to live in the Heart of Sydney. You will be impressed by the close proximity to Darling Harbour, Barangaroo, the QVB and Town Hall station.

Key points:

- * Fully furnished two bedroom apartment
- * North facing living area with large balcony
- * Double bedrooms with built-in wardrobes
- * Upgraded bathroom & master ensuite
- * Spacious kitchen with quality appliances
- * Secure building, onsite manager & lift access

2 🛏 2 🚿

View : <https://www.sydneycoveproperty.com/lease/nsw/sydney-city/sydney/residential/apartment/6216331>



Cherie Xue
02 9241 1288



Kayla Caldwell
02 9241 1288