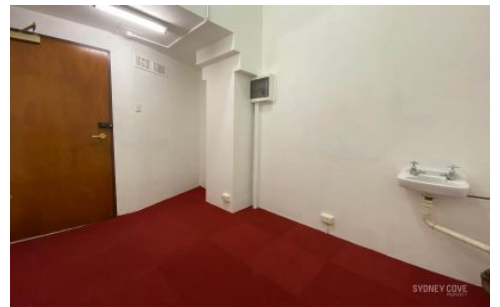


SYDNEY COVE

PROPERTY



135 Macquarie Street SYDNEY NSW

This 16m2 space is located in the Art Deco "BMA" building, situated on Macquarie street this office is suitable for a storage/file room if already in the building or a small private office.

- Opposite botanical gardens beautiful surroundings
- 16m2 of NLA situated on the first floor, internal water
- Bathrooms on each floor, Access via Stairs or Elevator

Available now! Contact Gareth from Sydney Cove Commercial now for an inspection!

View : <https://www.sydneycoveproperty.com/lease/nsw/sydney-city/sydney/commercial/offices/6216327>



Gareth Bootland
02 8259 3333