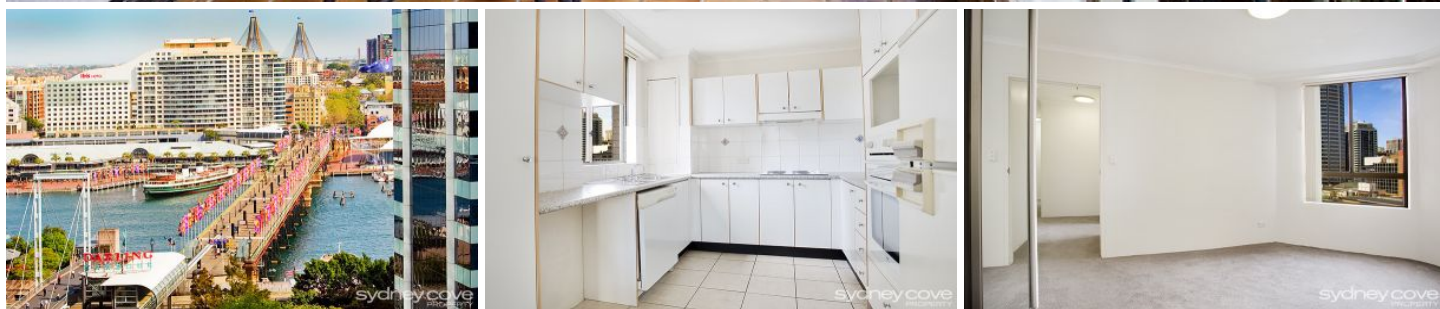


SYDNEY COVE

PROPERTY



25 Market Street SYDNEY NSW

2 2 1

Located on a high level of one of the central CBD's most popular buildings, this large apartment in 'The Berkeley' offers a rare opportunity to live the Heart of Sydney. Offering magnificent convenience and impressive views it is moments to Darling Harbour, World Square, QVB as well as shops and Town Hall station.

Features include:

- Spacious interior with well-designed layout
- North facing living area with large balcony
- Double bedroom with build-in wardrobes
- Two bathrooms, master with ensuite
- Large kitchen with plenty of bench space
- Concierge, intercom entry, Lift access

View : <https://www.sydneycoveproperty.com/lease/nsw/sydney-city/sydney/residential/apartment/6216278>



Kayla Caldwell
02 9241 1288



Cherie Xue
02 9241 1288