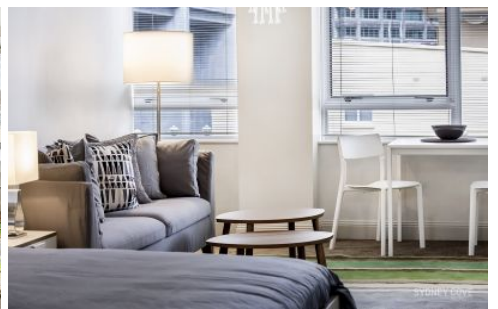


# SYDNEY COVE

PROPERTY



## 38 Bridge Street SYDNEY NSW

1 1

Boasting views over Bridge Street and plenty of natural light this apartment is definitely one to inspect. Positioned on level 16 of the contemporary, sought-after Bridgeport building, this light & airy studio apartment is only moments to the Rocks, Circular Quay, and the Northern city's finest shopping bars and restaurants.

**View :** <https://www.sydneycoveproperty.com/lease/nsw/sydney-city/sydney/residential/apartment/6216248>

Views over Bridge street to beautiful heritage buildings  
High ceilings, granite kitchen with a built in wardrobe  
Great condition throughout, with ducted air-conditioning  
Fully tiled bathroom with laundry, inc washer/dryer  
Onsite Building Manager, gymnasium and secure access



**Kayla Caldwell**  
02 9241 1288



**Cherie Xue**  
02 9241 1288