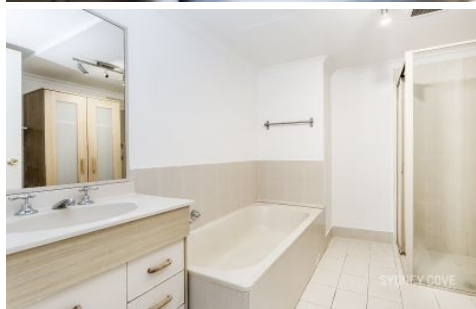


# SYDNEY COVE

PROPERTY



**220 Goulburn Street SYDNEY NSW**

1 1

Updated apartment in a prime position on the boarder of the CBD/Surry Hills. Located in a highly sought after complex this abode enjoys close proximity to Hyde Park, the CBD, cafes, bars and transport.

**View :** <https://www.sydneycoveproperty.com/lease/nsw/sydney-city/sydney/residential/apartment/6216245>

Key points:

- \* Recently updated, chic style
- \* Modern Galley style kitchen
- \* Bathroom, with bath tub
- \* Balcony with BBQ and table
- \* Queen bedroom with BIRs
- \* Roof terrace, pool and spa



**Cherie Xue**  
02 9241 1288



**Kayla Caldwell**  
02 9241 1288