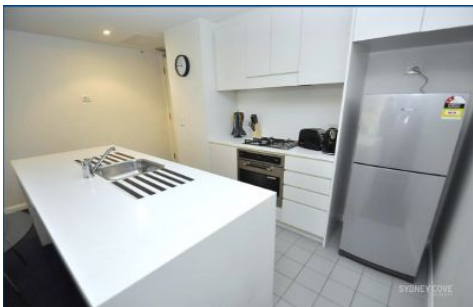


SYDNEY COVE

PROPERTY



35 Shelley Street SYDNEY NSW

1 1

This 1 bedroom furnished apartment situated on King Street Wharf is the perfect city pad. Located between Darling Harbour & Barangaroo, you are only moments to a large variety of restaurants, bars, entertainment and only a short walk to Wynyard Station.

View : <https://www.sydneycoveproperty.com/lease/nsw/sydney-city/sydney/residential/apartment/6216223>

Key Points

- * Generous sized lounge & dining room
- * Gourmet kitchen and Gas appliances
- * Tilde bathroom plus Internal laundry
- * Stylish furnishing and quality fittings
- * Ducted A/C, Intercom, Concierge lobby
- * Heated outdoor pool, Gym and Sauna



Cherie Xue
02 9241 1288



Kayla Caldwell
02 9241 1288