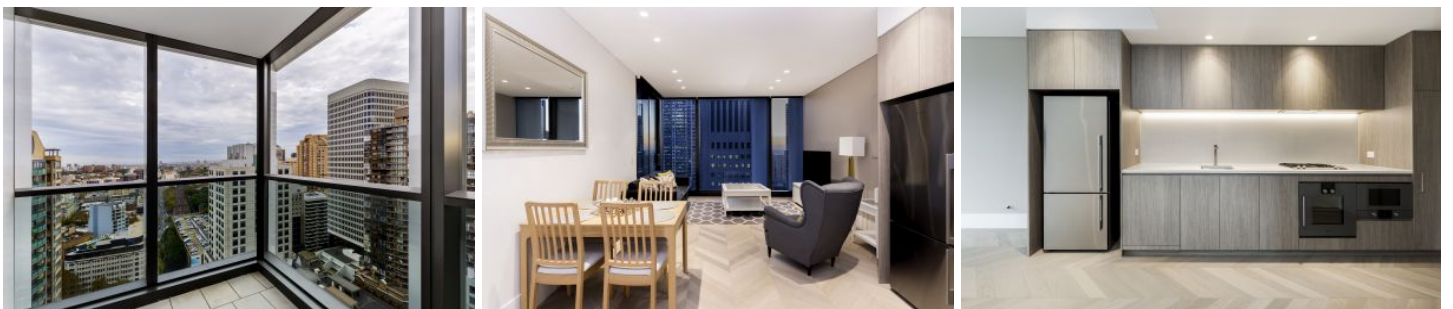


SYDNEY COVE

PROPERTY



130 Elizabeth Street SYDNEY NSW

2  1 

Be one of the first to enjoy Sydneys latest development, One 30 Hyde Park. This first-class building is located in the epicentre of the CBD, providing a world class living experience. This 2 bedroom apartment comes fully furnished and has been beautifully fitted with solid Herringbone timber flooring, modern finishes and large floor to ceiling glass windows. The apartment has ducted reverse cycle air-conditioning, and a state-of the art gas kitchen, Carrera marble & Gaggenau appliances. The apartment has a laundry with dryer & washing machine and a storage room. The apartment is opposite Hyde Park, Museum Station, shops, restaurants, cafes and bars. This 25th floor apartment has lovely views of Botany Bay and the city skyline. The apartment also has access to a communal barbeque area, and a fully fitted gym.

View : <https://www.sydneycoveproperty.com/lease/nsw/sydney-city/sydney/residential/apartment/6216194>



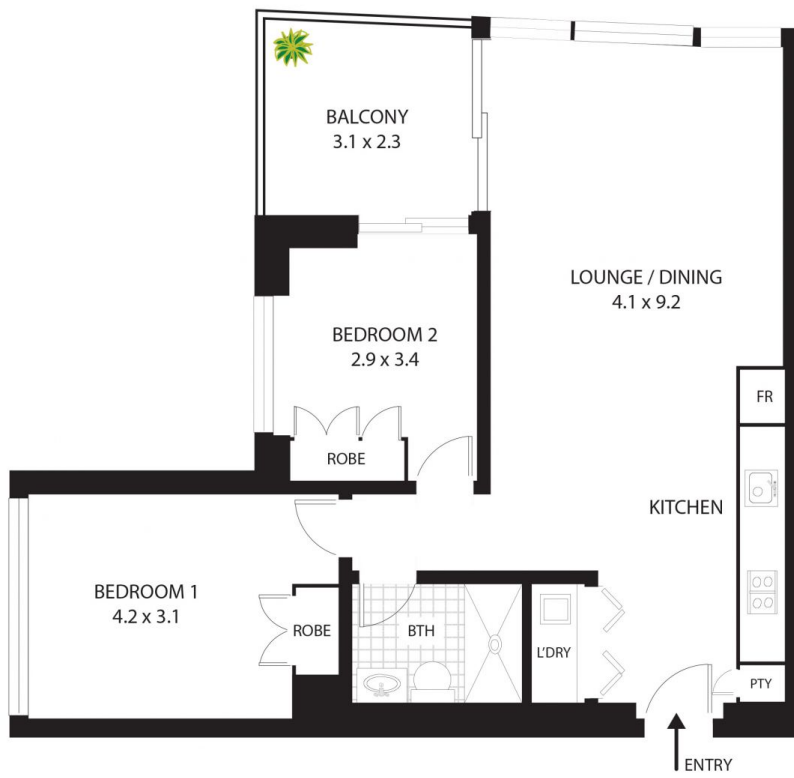
Kayla Caldwell
02 9241 1288



Cherie Xue
02 9241 1288

Key points:

<https://www.sydneycoveproperty.com>



2504/130 Elizabeth St, Sydney



All measurements are approximate only.
 Plan is provided as an indication of layout